

FHV BELT DRIVEN VENTILATION UNITS (FORWARD CURVED).....2	FKCF AXIAL ROOF FANS (HORIZONTAL OUTLET) .....25
FHV BELT DRIVEN VENTILATION UNITS (BACKWARD CURVED).....3	FACF AXIAL ROOF FANS (HORIZONTAL OUTLET) .....25
VENTILATION UNITS DIRECTION TEMPLATES .....4	DRPKT AXIAL IN LINE DUCT FANS WITH EXTERNAL ROTOR MOTOR 26
FHS KITCHEN EXHAUST FANS WITH CABIN (DOUBLE CABINET) .....5	PAKF AXIAL LARGE IN LINE DUCT CIRCULATION FANS(GREENHOUSE FAN)26
FDBK AXIAL SMOKE EXHAUST AND PRESSURIZING FANS.....5	PKT GALVINIZED IN LINE DUCT FANS.....26
FBSY BACKWARD-FORWARD CURVED LOW PRESSURE CENTRIFUGAL FANS.....6	FORWARD CURVED RADIAL FANS (EXTERNAL ROTOR MOTOR, METAL BODY) .....27
FALÇ NON MOTORIZED LOW PRESSURE CENTRIFUGAL FANS .....6	FORWARD CURVED RADIAL FANS (EXTERNAL ROTOR MOTOR, ALUMINIUM BODY) .....27
FBO MEDIUM PRESSURE CENTRIFUGAL FANS.....7	DRSY BACKWARD CURVED RADIAL FANS (EXTERNAL ROTOR MOTOR, METAL BODY) .....28
FOB NON MOTORIZED MEDIUM PRESSURE CENTRIFUGAL FANS .....7	METAL BODY FORWARD CURVED RADIAL FANS .....28
FBK HIGH PRESSURE CENTRIFUGAL BLOWERS .....8	METAL BODY RADIAL FANS.....28
FYB NON MOTORIZED HIGH PRESSURE CENTRIFUGAL BLOWERS ....8	POBRA METAL BODY OBRA SERIES RADIAL FANS.....29
FMK-A FORWARD AND BACKWARD CURVED SQUARE TYPE CENTRIFUGAL FANS .....9	OÇEŞ METAL BODY DOUBLE INLET FANS WITH CABIN .....29
FMK-O MEDIUM PRESSURE SQUARE TYPE CENTRIFUGAL FANS .....9	P-HSS STEEL BODY RADIAL FANS (EXTERNAL MOTOR).....29
FMK-K HIGH PRESSURE SQUARE TYPE CENTRIFUGAL FANS .....9	PDRAF AXIAL FANS WITH EXTERNAL ROTOR MOTOR .....30
FGS BACKWARD CURVED LOW PRESSURE CENTRIFUGAL FANS.....10	PDKAF SQUARE TYPE AXIAL FANS WITH EXTERNAL ROTOR MOTOR 30
FRK BACKWARD CURVED CONICAL MEDIUM PRESSURE FANS .....11	FÇYP REVERSIBLE AUTOMATIC SHUTTER FANS .....30
FAKK BELT DRIVEN BACKWARD CURVED LOW PRESSURE CENTRIFUGAL FANS .....12	PSM MONOPHASE AXIAL INDUSTRIAL ASPIRATORS (FRONT-REAR CAGE).....31
FAK LARGE SIZE SMOKE EXHAUST AND PRESSURIZING FANS (EXTERNAL MOTOR, METAL WINGS, DIRECT COUPLED) .....13	PST TRIPHASE AXIAL INDUSTRIAL ASPIRATORS (FRONT-REAR CAGE).....31
FAK-P LARGE SIZE SMOKE EXHAUST AND PRESSURIZING FANS (EXTERNAL MOTOR, PLASTIC WINGS, DIRECT COUPLED) .....13	PSMK SQUARE TYPE MONOPHASE INDUSTRIAL AXIAL EXHAUSTERS (METAL IMPELLERS) .....32
FDB TUBULAR SMOKE EXHAUST AND PRESSURIZING FANS (EXTERNAL MOTOR, DIRECT COUPLED, METAL WINGS) .....14	PSTK SQUARE TYPE TRIPHASE INDUSTRIAL AXIAL EXHAUSTERS (METAL IMPELLERS) .....32
FDB-P TUBULAR SMOKE EXHAUST AND PRESSURIZING FANS (EXTERNAL MOTOR, DIRECT COUPLED, PLASTIC WINGS).....14	FPSM SQUARE TYPE MONOPHASE INDUSTRIAL AXIAL EXHAUSTERS (PLASTIC IMPELLERS) .....32
FKDB LARGE SIZE BELT DRIVEN SMOKE EXHAUST AND PRESSURIZING FANS (EXTERNAL MOTOR, METAL WINGS).....15	FPST SQUARE TYPE TRIPHASE INDUSTRIAL AXIAL EXHAUSTERS (PLASTIC IMPELLERS) .....32
FKDB-P LARGE SIZE BELT DRIVEN SMOKE EXHAUST AND PRESSURIZING FANS (EXTERNAL MOTOR, PLASTIC WINGS) .....15	PKA AXIAL ASPIRATORS WITH LID AND FLANGE (SILENT) .....33
F4-KY 4 WINGS ROUND AXIAL ASPIRATORS (EXTERNAL MOTOR) ..16	PKA WINDOW-WALL TYPE AXIAL ASPIRATORS WITH FLANGE (SI- LENT) .....33
F4-KK 4 WINGS SQUARE AXIAL ASPIRATORS (EXTERNAL MOTOR)...16	PEK WALL TYPE AXIAL CHIMNEY FANS WITH ROLLER.....33
F7-KY 7 WINGS ROUND AXIAL ASPIRATORS (EXTERNAL MOTOR) ...17	D-BTA BATHROOM-WC-WALL CEILING FANS(SLIM-SILENT) .....34
F7-KK 7 WINGS SQUARE AXIAL ASPIRATORS (EXTERNAL MOTOR)...17	DTY ROUND DECORATIVE BATHROOM-WC-CEILING FANS .....34
FHP-Y ROUND AXIAL EXHAUSTERS (EXTERNAL MOTOR, PLASTIC WINGS).....18	APKT PLASTIC BODY AXIAL IN LINE DUCT FANS (SILENT).....34
FHP-K SQUARE AXIAL EXHAUSTERS (EXTERNAL MOTOR, PLASTIC WINGS).....18	FPP DEGREE ADJUSTABLE 5 AND 6 WINGS PLASTIC IMPELLERS .....35
FA 4 NON MOTORIZED AXIAL EXHAUSTERS (4 WINGS) .....19	IMPELLERS (SPARE PART) - METAL GREASE FILTERS.....35
FA 7 NON MOTORIZED AXIAL EXHAUSTERS (7 WINGS) .....19	PHA MONOPHASE SPEED CONTROL DEVICE .....35
FA 5 NON MOTORIZED AXIAL EXHAUSTERS (5 PLASTIC WINGS) .....19	FSK - FRV BACKWARD CURVED- FORWARD CURVED LOW PRESSURE DOUBLE INLET CENTRIFUGAL FANS .....35
FAGS-T TRIPHASE-ALUMINIUM BODY CENTRIFUGALS (FORWARD CURVED) .....20	FL2M AC MOTORS .....36
FAGS-M MONOPHASE-ALUMINIUM BODY CENTRIFUGALS (FORWARD CURVED) .....20	F4KGM SHADE POLE MOTORS (FAN MOTORS) .....36
FAGS-EK ECONOMIC ALUMINIUM BODY CENTRIFUGALS (FORWARD CURVED) .....20	MONOPHASE AND TRIPHASE CENTRIFUGAL AND ASPIRATOR MO- TORS .....36
FAGS-KT TRIPHASE-ALUMINIUM BODY HIGH PRESSURE CENTRIFUGAL BLOWERS.....21	2 POLE AXIAL EXTERNAL ROTOR MOTORS.....36
FAGS-KM MONOPHASE-ALUMINIUM BODY HIGH PRESSURE CENTRIFUGAL BLOWERS.....21	FRF SINGLE INLET RADIAL MOTORS AND FANS (BACKWARD CURVED, METAL) .....37
FBF ALUMINIUM BODY BALLON INFLATION FANS .....21	PRF SINGLE INLET CENTRIFUGAL MOTORS AND FANS (FORWARD CURVED, METAL) .....37
FSG-SK TRIPHASE FORWARD CURVED CENTRIFUGALS (EXTERNAL MOTOR, STEEL BODY) .....22	INDUSTRIAL VENTILATORS .....38
FSG-SK MONOPHASE FORWARD CURVED CENTRIFUGALS (EXTERNAL MOTOR, STEEL BODY) .....22	ELECTRICAL HEATERS (EKVATOR) .....39
LKT BACKWARD CURVED ROUND IN LINE DUCT FANS .....23	WARRANTY CONDITIONS .....40
FDKF BACKWARD CURVED RECTANGULAR IN LINE DUCT FANS ....23	BANK ACCOUNT NUMBERS .....40
FBCF CENTRIFUGAL ROOF FANS (HORIZONTAL OUTLET) .....24	CERTIFICATES.....40
FCF CENTRIFUGAL ROOF FANS (HORIZONTAL OUTLET) .....24	



## FHV

BELT DRIVEN VENTILATION  
UNITS (FORWARD CURVED)



MODEL	FAN TYPE	VOLTAGE (VOLT/Hz)	POWER		CURRENT (A)	SPEED (d/d)	AIR FLOW (m3/h)	PRESSURE (mm/ss)	SOUND (DBA)		
			HP	KW							
FHV-7-01	7X7	230/380/50	1	0,75	2,10	1400	2000	40	81		
FHV-7-02	7X7	230/380/50	1,5	1,1	2,60	1400	2500	40	85		
FHV-7-03	7X7	230/380/50	2	1,5	3,50	1400	3000	30	87		
FHV-9-01	9X9	230/380/50	1,5	1,1	2,60	1400	4000	39	85		
FHV-9-02	9X9	230/380/50	2	1,5	3,50	1400	5000	42	91		
FHV-9-03	9X9	230/380/50	3	2,2	5,00	1400	6000	40	95		
FHV-10-01	10X10	230/380/50	2	1,5	3,50	1400	4500	47	85		
FHV-10-02	10X10	230/380/50	3	2,2	5,00	1400	5500	43	86		
FHV-10-03	10X10	230/380/50	4	3	6,60	1400	6500	48	90		
FHV-10-04	10X10	380/50	5,5	4	8,20	1400	7000	52	97		
FHV-12-01	12X12	230/380/50	3	2,2	5,00	1400	7500	41	87		
FHV-12-02	12X12	230/380/50	4	3	6,60	1400	8500	42	90		
FHV-12-03	12X12	380/50	5,5	4	8,20	1400	9500	39	91		
FHV-15-01	15X15	230/380/50	4	3	6,60	1400	10000	51	85		
FHV-15-02	15X15	380/50	5,5	4	8,20	1400	12000	55	90		
FHV-15-03	15X15	380/50	7,5	5,5	11,20	1400	14000	43	90		
FHV-18-01	18X18	380/50	5,5	4	8,20	1400	16000	47	90		
FHV-18-02	18X18	380/50	7,5	5,5	11,20	1400	18000	48	92		
FHV-18-03	18X18	380/50	10	7,5	15,40	1400	20000	55	90		

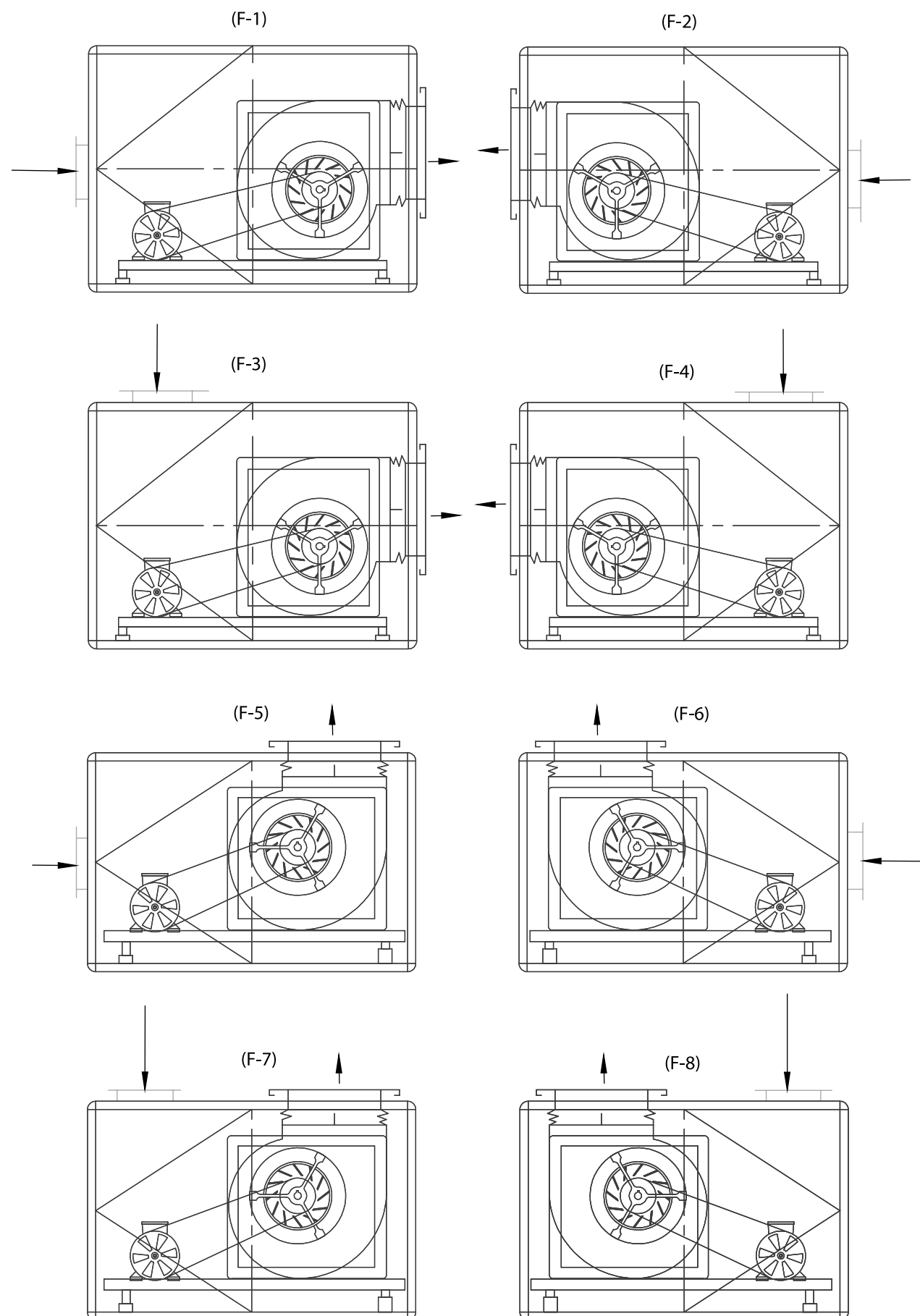
## FHV

BELT DRIVEN VENTILATION  
UNITS (BACKWARD CURVED)



MODEL	FAN TYPE	VOLTAGE (VOLT/Hz)	POWER		CURRENT (A)	SPEED (d/d)	AIR FLOW (m3/h)	PRESSURE (mm/ss)	SOUND (DBA)		
			HP	KW							
FHV-250-1	250 A	230/380/50	1	0,75	2,10	1400	3000	40	85		
FHV-250-2	250 B	230/380/50	1,5	1,1	2,60	1400	4000	40	85		
FHV-280-1	280 A	230/380/50	1,5	1,1	2,60	1400	5000	40	87		
FHV-280-2	280 B	230/380/50	2	1,5	3,50	1400	6000	40	87		
FHV-315-1	315 A	230/380/50	3	2,2	5,00	1400	7000	40	90		
FHV-315-2	315 B	230/380/50	4	3	6,60	1400	8000	40	90		
FHV-355-1	355 A	230/380/50	4	3	6,60	1400	10000	40	93		
FHV-355-2	355 B	380/50	5,5	4	8,20	1400	12000	40	93		
FHV-400-1	400 A	380/50	5,5	4	8,20	1400	13000	40	91		
FHV-400-2	400 B	380/50	7,5	5,5	11,20	1400	14000	40	93		
FHV-450-1	450 A	380/50	7,5	5,5	11,20	1400	16000	40	95		
FHV-450-2	450 B	380/50	10	7,5	15,40	1400	18000	40	95		
FHV-500-1	500 A	380/50	10	7,5	15,40	1400	20000	40	97		
FHV-500-2	500 B	380/50	15	11	21,00	1400	22000	40	97		

## VENTILATION UNITS DIRECTION TEMPLATES



## FHS

BACKWARD CURVED

KITCHEN EXHAUST FANS WITH CABIN(DOUBLE CABINET)

MODEL	VOLTAGE (VOLT/HZ)	POWER		CURRENT (A)	SPEED (d/d)	AIR FLOW (m3/h)	PRESSURE (mm/ss)		
		HP	KW						
FHS-1	230/380/50	1	0,75	2,10	1400	2500	40		
FHS-1,5	230/380/50	1,5	1,1	2,60	1400	4000	45		
FHS-2	230/380/50	2	1,5	3,50	1400	6000	50		
FHS-3	230/380/50	3	2,2	5,00	1400	8000	55		
FHS-4	230/380/50	4	3	6,60	1400	10000	60		
FHS-5,5	380/50	5,5	4	8,20	1400	12000	65		
FHS-7,5	380/50	7,5	5,5	11,20	1400	16000	70		
FHS-10	380/50	10	7,5	15,40	1400	20000	75		
FHS-15	380/50	15	11	21,00	1400	25000	85		
FHS-20	380/50	20	15	29,80	1400	30000	100		
FHS-25	380/50	25	18,5	34,50	1400	35000	110		
FHS-30	380/50	30	22	42,50	1400	40000	120		
FHS-40	380/50	40	30	55,00	1400	45000	150		
FHS-50	380/50	50	37	67,00	1400	50000	180		



MODEL	VOLTAGE (VOLT/HZ)	POWER		CURRENT (A)	SPEED (d/d)	AIR FLOW (m3/h)		
		HP	KW					
FDBK-30	230/380/50	1/2	0,37	1,15	1400	3500		
FDBK-35	230/380/50	1/2	0,37	1,15	1400	4000		
FDBK-40	230/380/50	1/2	0,37	1,15	1400	5000		
FDBK-45	230/380/50	1/2	0,37	1,15	1400	6000		
FDBK-50	230/380/50	1	0,75	2,10	1400	8000		
FDBK-55	230/380/50	1	0,75	2,10	1400	10000		
FDBK-60	230/380/50	1,5	1,1	2,60	1400	12000		
FDBK-65	230/380/50	2	1,5	3,50	1400	14000		
FDBK-70	230/380/50	3	2,2	5,00	1400	16000		
FDBK-75	230/380/50	4	3	6,60	1400	20000		
FDBK-80	380/50	5,5	4	8,20	1400	25000		
FDBK-90	380/50	7,5	5,5	11,20	1400	35000		
FDBK-100	380/50	7,5	5,5	11,20	1400	40000		
FDBK-112	380/50	10	7,5	15,40	1400	45000		
FDBK-125	380/50	10	7,5	15,40	1400	50000		

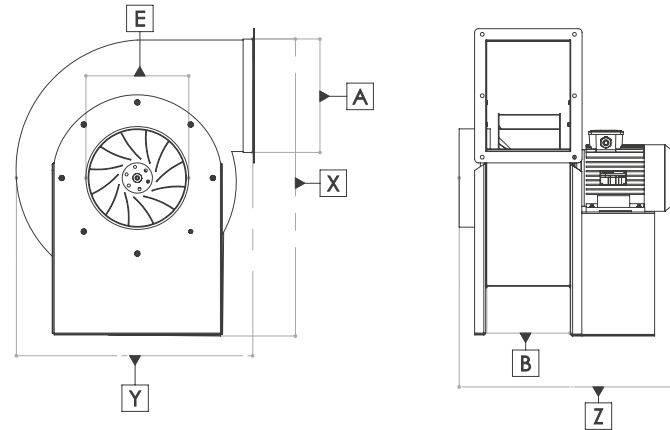
## FDBK

AXIAL SMOKE EXHAUST  
AND  
PRESSURIZING FANS



## FBSY

BACKWARD-FORWARD CURVED  
LOW PRESSURE CENTRIFUGAL FANS



MODEL	HEIGHT X (mm)	WINDTH Y (mm)	DEPTH Z (mm)	INLET E (mm)	OUTLET A (mm)
FBSY-0,5	458	430	465	200	200X160
FBSY-1	575	530	485	220	260X180
FBSY-1,5	615	570	525	240	270X200
FBSY-2	703	630	545	260	290X220
FBSY-3	725	650	586	300	320X230
FBSY-4	773	690	605	325	320X250
FBSY-5,5	834	740	613	350	380X250
FBSY-7,5	934	850	720	380	440X280
FBSY-10	1045	930	813	420	540X350

MODEL	VOLTAGE (VOLT/Hz)	POWER		CURRENT (A)	SPEED (d/d)	AIR FLOW (m3/h)	PRESSURE (mm/ss)		
		HP	KW						
FBSY-0,5	230/380/50	1/2	0,37	1,15	1400	2000	40		
FBSY-1	230/380/50	1	0,75	2,10	1400	3000	50		
FBSY-1,5	230/380/50	1,5	1,1	2,60	1400	4000	60		
FBSY-2	230/380/50	2	1,5	3,50	1400	5000	70		
FBSY-3	230/380/50	3	2,2	5,00	1400	7000	80		
FBSY-4	230/380/50	4	3	6,60	1400	8000	90		
FBSY-5,5	380/50	5,5	4	8,20	1400	10000	100		
FBSY-7,5	380/50	7,5	5,5	11,20	1400	12000	110		
FBSY-10	380/50	10	7,5	15,40	1400	14000	120		

## FALÇ

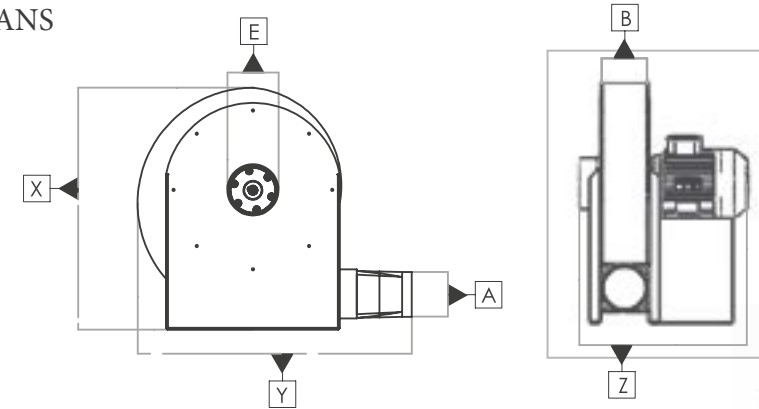
NON MOTORIZED LOW PRESSURE  
CENTRIFUGAL FANS



MODEL	POWER		CURRENT (A)	AIR FLOW (m3/h)	PRESSURE (mm/ss)		
	HP	KW					
FALÇ-0,5	1/2	0,37	1400	2000	40		
FALÇ-1	1	0,75	1400	3000	50		
FALÇ-1,5	1,5	1,1	1400	4000	60		
FALÇ-2	2	1,5	1400	5000	70		
FALÇ-3	3	2,2	1400	7000	80		
FALÇ-4	4	3	1400	8000	90		
FALÇ-5,5	5,5	4	1400	10000	100		
FALÇ-7,5	7,5	5,5	1400	12000	110		
FALÇ-10	10	7,5	1400	14000	120		

## FBO

MEDIUM PRESSURE  
RADIAL FANS



MODEL	HEIGHT X (mm)	WINDTH Y (mm)	DEPTH Z (mm)	INLET E (mm)	OUTLET A (mm)	BAND B (mm)
FBO-0,5	490	550	380	100	100	100
FBO-1	580	650	410	120	100	100
FBO-1,5	610	700	426	120	100	100
FBO-2	640	725	443	130	120	120
FBO-3	680	760	448	130	120	120
FBO-4	735	813	480	140	140	150
FBO-5,5	790	881	506	150	150	150
FBO-7,5	840	913	586	190	170	150
FBO-10	875	933	606	200	170	150
FBO-15	975	1025	670	220	200	180
FBO-20	1075	1130	720	250	220	200



MODEL	VOLTAGE (VOLT/Hz)	POWER		CURRENT (A)	SPEED (d/d)	AIR FLOW (m3/h)	PRESSURE (mm/ss)		
		HP	KW						
FBO-0,5	230/380/50	1/2	0,37	1,05	2800	1200	120		
FBO-1	230/380/50	1	0,75	1,70	2800	1500	150		
FBO-1,5	230/380/50	1,5	1,1	2,30	2800	2000	200		
FBO-2	230/380/50	2	1,5	3,30	2800	3000	250		
FBO-3	230/380/50	3	2,2	4,48	2800	4000	350		
FBO-4	230/380/50	4	3	5,80	2800	5000	450		
FBO-5,5	380/50	5,5	4	7,40	2800	6000	500		
FBO-7,5	380/50	7,5	5,5	10,30	2800	7000	600		
FBO-10	380/50	10	7,5	13,60	2800	8000	700		
FBO-15	380/50	15	11	19,50	2800	10000	800		
FBO-20	380/50	20	15	28,30	2800	12000	900		

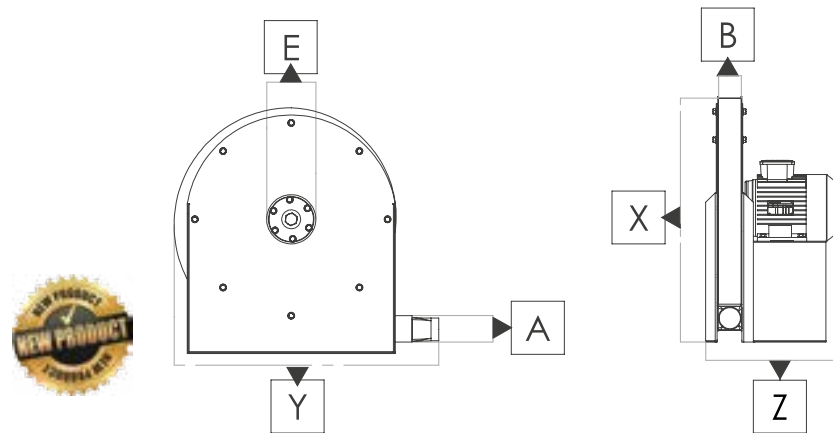
## FOB

NON MOTORIZED LOW PRESSURE  
RADIAL FANS

MODEL	POWER		SPEED (d/d)	AIR FLOW (m3/h)	PRESSURE (mm/ss)		
	HP	KW					
FOB-0,5	1/2	0,37	2800	1200	120		
FOB-1	1	0,75	2800	1500	150		
FOB-1,5	1,5	1,1	2800	2000	200		
FOB-2	2	1,5	2800	3000	250		
FOB-3	3	2,2	2800	4000	350		
FOB-4	4	3	2800	5000	450		
FOB-5,5	5,5	4	2800	6000	500		
FOB-7,5	7,5	5,5	2800	7000	600		
FOB-10	10	7,5	2800	8000	700		

## FBK

HIGH PRESSURE  
CENTRIFUGAL BLOWERS



MODEL	HEIGHT X (mm)	WINDTH Y (mm)	DEPTH Z (mm)	INLET E (mm)	OUTLET A (mm)	BAN B (mm)
FBK-0,5	500	550	326	100	60	60
FBK-1	585	630	326	120	60	60
FBK-1,5	623	655	362	120	70	60
FBK-2	650	700	387	130	70	60
FBK-3	710	760	406	140	80	70
FBK-4	730	770	416	150	80	80
FBK-5,5	770	810	470	160	90	80
FBK-7,5	820	880	520	170	100	80
FBK-10	890	960	550	180	100	100
FBK-15	1200	1200	610	200	120	120
FBK-20	1250	1360	640	220	120	120

MODEL	VOLTAGE (VOLT/Hz)	POWER		CURRENT (A)	SPEED (d/d)	AIR FLOW (m3/h)	PRESSURE (mm/ss)		
		HP	KW						
FBK-0,5	230/380/50	1/2	0,37	1,05	2800	500	250		
FBK-1	230/380/50	1	0,75	1,70	2800	700	300		
FBK-1,5	230/380/50	1,5	1,1	2,30	2800	900	400		
FBK-2	230/380/50	2	1,5	3,30	2800	1200	500		
FBK-3	230/380/50	3	2,2	4,48	2800	1500	600		
FBK-4	230/380/50	4	3	5,80	2800	1800	700		
FBK-5,5	380/50	5,5	4	7,40	2800	2200	800		
FBK-7,5	380/50	7,5	5,5	10,30	2800	2500	900		
FBK-10	380/50	10	7,5	13,60	2800	3000	1000		
FBK-15	380/50	15	11	19,50	2800	3500	1100		
FBK-20	380/50	20	15	28,30	2800	4000	1200		

## FYB

NON MOTORIZED  
HIGH PRESSURE  
CENTRIFUGAL BLOWERS



MODEL	POWER		SPEED (d/d)	AIR FLOW (m3/h)	PRESSURE (mm/ss)		
	HP	KW					
FYB-0,5	1/2	0,37	2800	500	250		
FYB-1	1	0,75	2800	700	300		
FYB-1,5	1,5	1,1	2800	900	400		
FYB-2	2	1,5	2800	1200	500		
FYB-3	3	2,2	2800	1500	600		
FYB-4	4	3	2800	1800	700		
FYB-5,5	5,5	4	2800	2200	800		
FYB-7,5	7,5	5,5	2800	2500	900		
FYB-10	10	7,5	2800	3000	1000		



FMK-A



FMK-O



FMK-K



## FMK-A

BACKWARD-FORWARD CURVED SQUARE TYPE LOW PRESSURE CENTRIFUGAL FANS

MODEL	VOLTAGE (VOLT/Hz)	POWER		CURRENT (A)	SPEED (d/d)	AIR FLOW (m3/h)	PRESSURE (mm/ss)	INLET (mm)	OUTLET (mm)		
		HP	KW								
FMK-A-0,5	230/380/50	1/2	0,37	1,15	1400	2000	40	200	200x160		
FMK-A-1	230/380/50	1	0,75	2,10	1400	3000	50	220	260x180		
FMK-A-1,5	230/380/50	1,5	1,1	2,60	1400	4000	60	240	270x200		
FMK-A-2	230/380/50	2	1,5	3,50	1400	5000	70	260	290x220		
FMK-A-3	230/380/50	3	2,2	5,00	1400	7000	80	300	320x230		
FMK-A-4	230/380/50	4	3	6,60	1400	8000	90	325	320x250		
FMK-A-5,5	380/50	5,5	4	8,20	1400	10000	100	350	380x250		
FMK-A-7,5	380/50	7,5	5,5	11,20	1400	12000	110	380	440x280		
FMK-A-10	380/50	10	7,5	15,40	1400	14000	120	420	540x350		

## FMK-O

MEDIUM PRESSURE SQUARE TYPE RADIAL FANS

MODEL	VOLTAGE (VOLT/Hz)	POWER		CURRENT (A)	SPEED (d/d)	AIR FLOW (m3/h)	PRESSURE (mm/ss)	INLET (mm)	OUTLET (mm)		
		HP	KW								
FMK-O-0,5	230/380/50	1/2	0,37	1,05	2800	1200	120	100	100		
FMK-O-1	230/380/50	1	0,75	1,70	2800	1500	150	120	100		
FMK-O-1,5	230/380/50	1,5	1,1	2,30	2800	2000	200	120	100		
FMK-O-2	230/380/50	2	1,5	3,30	2800	3000	250	130	120		
FMK-O-3	230/380/50	3	2,2	4,48	2800	4000	350	130	120		
FMK-O-4	230/380/50	4	3	5,80	2800	5000	450	140	140		
FMK-O-5,5	380/50	5,5	4	7,40	2800	6000	500	150	150		
FMK-O-7,5	380/50	7,5	5,5	10,30	2800	7000	600	190	170		
FMK-O-10	380/50	10	7,5	13,60	2800	8000	700	200	170		

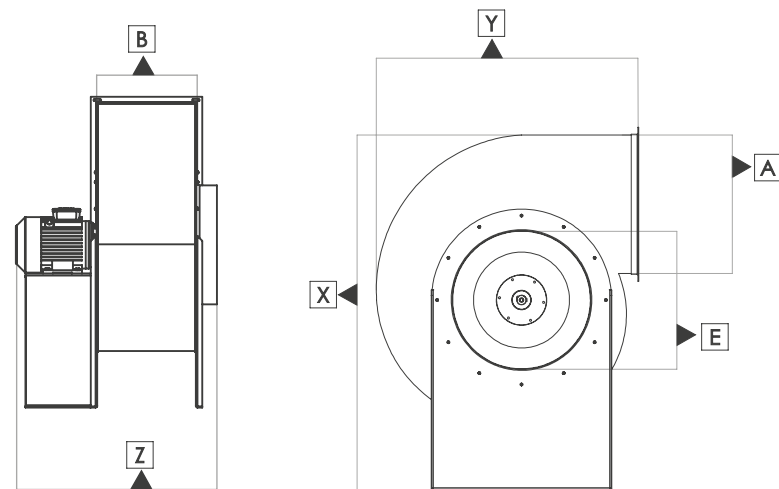
## FMK-K

HIGH PRESSURE SQUARE TYPE CENTRIFUGAL BLOWERS

MODEL	VOLTAGE (VOLT/Hz)	POWER		CURRENT (A)	SPEED (d/d)	AIR FLOW (m3/h)	PRESSURE (mm/ss)	INLET (mm)	OUTLET (mm)		
		HP	KW								
FMK-K-0,5	230/380/50	1/2	0,37	1,05	2800	500	250	100	60		
FMK-K-1	230/380/50	1	0,75	1,70	2800	700	300	120	60		
FMK-K-1,5	230/380/50	1,5	1,1	2,30	2800	900	400	120	70		
FMK-K-2	230/380/50	2	1,5	3,30	2800	1200	500	130	70		
FMK-K-3	230/380/50	3	2,2	4,48	2800	1500	600	140	80		
FMK-K-4	230/380/50	4	3	5,80	2800	1800	700	150	80		
FMK-K-5,5	380/50	5,5	4	7,40	2800	2200	800	160	90		
FMK-K-7,5	380/50	7,5	5,5	10,30	2800	2500	900	170	100		
FMK-K-10	380/50	10	7,5	13,60	2800	3000	1000	180	100		

## FGS

BACWARD CURVED  
LOW PRESSURE CENTRIFUGAL FANS

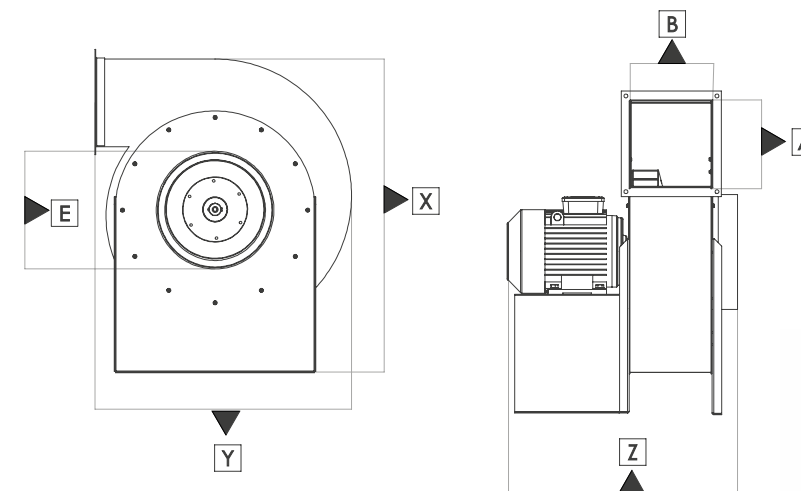


MODEL	HEIGHT X (mm)	WINDTH Y (mm)	DEPTH Z (mm)	INLET E (mm)	OUTLET AxB(mm)
FGS-0,5	585	515	430	200	200X180
FGS-1	675	610	470	300	260X200
FGS-1,5	785	710	520	350	270X230
FGS-2	785	710	540	350	300X250
FGS-3	845	750	620	400	400X300
FGS-4	880	820	670	450	450X350
FGS-5,5	1040	930	760	500	500X400
FGS-7,5	1245	1040	850	550	550X450
FGS-10	1245	1100	920	600	600X500
FGS-15	1295	1170	1020	700	700X550
FGS-20	1525	1300	1100	750	800X600
FGS-25	1575	1350	1100	800	800X600

MODEL	VOLTAGE (VOLT/Hz)	POWER		CURRENT (A)	SPEED (d/d)	AIR FLOW (m3/h)	PRESSURE (mm/ss)		
		HP	KW						
FGS-0,5	230/380/50	1/2	0,37	1,15	1400	2000	35		
FGS-1	230/380/50	1	0,75	2,10	1400	3500	40		
FGS-1,5	230/380/50	1,5	1,1	2,60	1400	4500	45		
FGS-2	230/380/50	2	1,5	3,50	1400	6000	50		
FGS-3	230/380/50	3	2,2	5,00	1400	8000	55		
FGS-4	230/380/50	4	3	6,60	1400	10000	60		
FGS-5,5	380/50	5,5	4	8,20	1400	12000	65		
FGS-7,5	380/50	7,5	5,5	11,20	1400	16000	70		
FGS-10	380/50	10	7,5	15,40	1400	20000	75		
FGS-15	380/50	15	11	21,00	1400	25000	85		
FGS-20	380/50	20	15	29,80	1400	30000	100		
FGS-25	380/50	25	18,5	34,50	1400	35000	110		
FGS-30	380/50	30	22	42,50	1400	40000	120		
FGS-40	380/50	40	30	55,00	1400	45000	150		
FGS-50	380/50	50	37	67,00	1400	50000	150		

## FRK

BACKWARD CURVED CONICAL  
MEDIUM PRESSURE FANS



MODEL	HEIGHT X (mm)	WINDTH Y (mm)	DEPTH Z (mm)	INLET E (mm)	OUTLET AxB(mm)
FRK-0,5	460	350	320	150	120x120
FRK-1	530	420	350	150	120x120
FRK-1,5	590	480	380	150	120x120
FRK-2	620	500	440	180	150x150
FRK-3	680	550	480	200	160x180
FRK-4	700	580	500	220	180x200
FRK-5,5	790	660	570	250	200x200
FRK-7,5	840	690	590	300	250x250
FRK-10	860	700	620	300	250x250
FRK-15	950	820	670	350	270x250
FRK-20	1030	900	710	400	320x250
FRK-25	1130	980	760	400	350x250

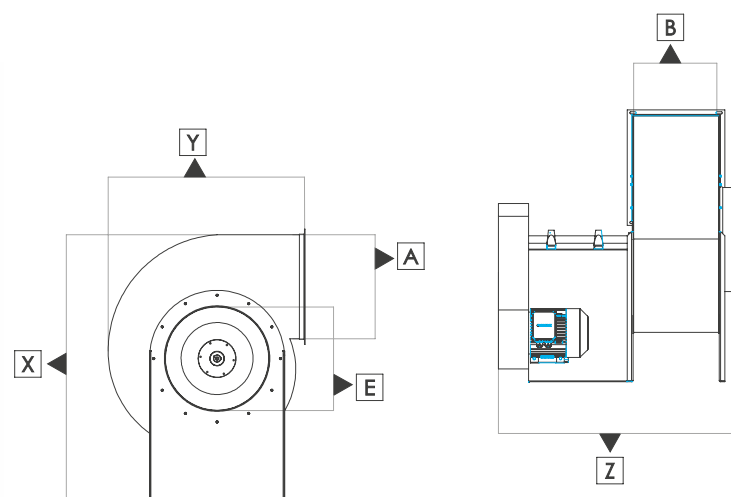
MODEL	VOLTAGE (VOLT/Hz)	POWER		CURRENT (A)	SPEED (d/d)	AIR FLOW (m3/h)	PRESSURE (mm/ss)		
		HP	KW						
FRK-0,5	230/380/50	1/2	0,37	1,05	2800	3000	50		
FRK-1	230/380/50	1	0,75	1,70	2800	4000	50		
FRK-1,5	230/380/50	1,5	1,1	2,30	2800	5000	60		
FRK-2	230/380/50	2	1,5	3,30	2800	6000	60		
FRK-3	230/380/50	3	2,2	4,48	2800	7000	80		
FRK-4	230/380/50	4	3	5,80	2800	8000	80		
FRK-5,5	380/50	5,5	4	7,40	2800	9000	120		
FRK-7,5	380/50	7,5	5,5	10,30	2800	10000	120		
FRK-10	380/50	10	7,5	13,60	2800	11000	180		
FRK-15	380/50	15	11	19,50	2800	12000	200		
FRK-20	380/50	20	15	28,30	2800	14000	200		
FRK-25	380/50	25	18,5	32,30	2800	15000	200		
FRK-30	380/50	30	22	38,30	2800	17000	250		
FRK-40	380/50	40	30	52,00	2800	18500	250		
FRK-50	380/50	50	37	65,00	2800	20000	250		





# FAKK

BELT DRIVEN BACKWARD CURVED  
LOW PRESSURE CENTRIFUGAL FANS



MODEL	HEIGHT X (mm)	WINDTH Y (mm)	DEPTH Z (mm)	INLET E (mm)	OUTLET A (mm)
FAKK-0,5	585	515	630	200	200X180
FAKK-1	675	610	670	300	260X200
FAKK-1,5	785	710	720	350	270X230
FAKK-2	785	710	780	350	300X250
FAKK-3	845	750	820	400	400X300
FAKK-4	880	820	870	450	450X350
FAKK-5,5	1040	930	960	500	500X400
FAKK-7,5	1245	1040	1050	550	550X450
FAKK-10	1245	1100	1120	600	600X500
FAKK-15	1295	1170	1120	700	700X550
FAKK-20	1525	1300	1300	750	800X600
FAKK-25	1575	1350	1300	800	800X600
FAKK-30	1625	1400	1350	800	800X650



MODEL	VOLTAGE (VOLT/Hz)	POWER HP KW	CURRENT (A)	SPEED (d/d)	AIR FLOW (m3/h)	PRESSURE (mm/ss)
FAKK-0,5	230/380/50	1/2 0,37	1,15	1400	2000	35
FAKK-1	230/380/50	1 0,75	2,10	1400	3500	40
FAKK-1,5	230/380/50	1,5 1,1	2,60	1400	4500	45
FAKK-2	230/380/50	2 1,5	3,50	1400	6000	50
FAKK-3	230/380/50	3 2,2	5,00	1400	8000	55
FAKK-4	230/380/50	4 3	6,60	1400	10000	60
FAKK-5,5	380/50	5,5 4	8,20	1400	12000	65
FAKK-7,5	380/50	7,5 5,5	11,20	1400	16000	70
FAKK-10	380/50	10 7,5	15,40	1400	20000	75
FAKK-15	380/50	15 11	21,00	1400	25000	85
FAKK-20	380/50	20 15	29,80	1400	30000	100
FAKK-25	380/50	25 18,5	34,50	1400	35000	110
FAKK-30	380/50	30 22	42,50	1400	40000	120
FAKK-40	380/50	40 30	55,00	1400	45000	150
FAKK-50	380/50	50 37	67,00	1400	50000	150

# FAK

LARGE SIZE SMOKE EXHAUST AND PRESSURIZING FANS  
(EXTERNAL MOTOR, METAL WINGS, DIRECT COUPLED)



MODEL	VOLTAGE (VOLT/Hz)	POWER HP KW	CURRENT (A)	SPEED (d/d)	AIR FLOW (m3/h)	IMPELLER DIAME- TER (mm)	CIRLCE DIAMETER (mm)	WINDTH (mm)
FAK-30	230/380/50	1/2 0,37	1,15	1400	3500	300	330	400
FAK-35	230/380/50	1/2 0,37	1,15	1400	4000	350	380	400
FAK-40	230/380/50	1/2 0,37	1,15	1400	5000	400	430	450
FAK-45	230/380/50	1/2 0,37	1,15	1400	6000	450	480	450
FAK-50	230/380/50	1 0,75	2,10	1400	8000	500	530	450
FAK-55	230/380/50	1 0,75	2,10	1400	10000	550	580	550
FAK-60	230/380/50	1,5 1,1	2,60	1400	12000	600	630	550
FAK-65	230/380/50	2 1,5	3,50	1400	14000	650	680	650
FAK-70	230/380/50	3 2,2	5,00	1400	16000	700	730	650
FAK-75	230/380/50	4 3	6,60	1400	20000	750	780	750
FAK-80	380/50	5,5 4	8,20	1400	25000	800	830	750
FAK-90	380/50	7,5 5,5	11,20	1400	35000	900	930	800
FAK-100	380/50	7,5 5,5	11,20	1400	40000	1000	1030	850
FAK-112	380/50	10 7,5	15,40	1400	45000	1120	1150	900
FAK-125	380/50	10 7,5	15,40	1400	50000	1250	1280	1000

# FAK-P

LARGE SIZE SMOKE EXHAUST AND PRESSURIZING FANS  
(EXTERNAL MOTOR, PLASTIC WINGS, DIRECT COUPLED)



MODEL	VOLTAGE (VOLT/Hz)	POWER HP KW	CURRENT (A)	SPEED (d/d)	AIR FLOW (m3/h)	IMPELLER DIAME- TER (mm)	CIRLCE DIAMETER (mm)	WINDTH (mm)
FAK-P-30	230/380/50	1/3 0,25	0,81	1400	3000	300	330	400
FAK-P-35	230/380/50	1/3 0,25	0,81	1400	4000	350	380	400
FAK-P-40	230/380/50	1/3 0,25	0,81	1400	5500	400	430	450
FAK-P-45	230/380/50	1/2 0,37	1,15	1400	6500	450	480	450
FAK-P-50	230/380/50	1/2 0,37	1,15	1400	7500	500	530	450
FAK-P-55	230/380/50	3/4 0,55	1,60	1400	9000	550	580	550
FAK-P-60	230/380/50	1 0,75	2,10	1400	11000	600	630	550
FAK-P-65	230/380/50	1,5 1,1	2,60	1400	12500	650	680	650
FAK-P-70	230/380/50	1,5 1,1	2,60	1400	14000	700	730	650
FAK-P-75	230/380/50	2 1,5	3,50	1400	16000	750	780	750
FAK-P-80	230/380/50	3 2	5,00	1400	20000	800	830	750
FAK-P-90	380/50	5,5 4	8,20	1400	35000	900	930	800
FAK-P-100	380/50	7,5 5,5	11,20	1400	42000	1000	1030	850

## FDB

TUBULAR SMOKE EXHAUST AND PRESSURIZING FANS  
(EXTERNAL MOTOR, DIRECT COUPLED, METAL WINGS)



MODEL	VOLTAGE (VOLT/HZ)	POWER		CURRENT (A)	SPEED (d/d)	AIR FLOW (m3/h)	IMPELLER DIAME-	CIRLCE DIAM-	ETER(mm) WINDTH (mm)		
		HP	KW								
FDB-30	230/380/50	1/2	0,37	1,15	1400	3,500	300	330	220		
FDB-35	230/380/50	1/2	0,37	1,15	1400	4000	350	380	220		
FDB-40	230/380/50	1/2	0,37	1,15	1400	5000	400	430	220		
FDB-45	230/380/50	1/2	0,37	1,15	1400	6000	450	480	220		
FDB-50	230/380/50	1	0,75	2,10	1400	8000	500	530	300		
FDB-55	230/380/50	1	0,75	2,10	1400	10000	550	580	300		
FDB-60	230/380/50	1,5	1,1	2,60	1400	12000	600	630	300		
FDB-65	230/380/50	2	1,5	3,50	1400	14000	650	680	300		
FDB-70	230/380/50	3	2,2	5,00	1400	16000	700	730	340		
FDB-75	230/380/50	4	3	6,60	1400	20000	750	780	340		
FDB-80	380/50	5,5	4	8,20	1400	25000	800	830	340		
FDB-90	380/50	7,5	5,5	11,20	1400	35000	850	880	390		
FDB-100	380/50	7,5	5,5	11,20	1400	40000	1000	1030	450		
FDB-112	380/50	10	7,5	15,40	1400	50000	1120	1150	450		
FDB-125	380/50	10	7,5	15,40	1400	55000	1250	1280	450		

## FDB-P

TUBULAR SMOKE EXHAUST AND PRESSURIZING FANS  
(EXTERNAL MOTOR, DIRECT COUPLED, PLASTIC WINGS)



MODEL	VOLTAGE (VOLT/HZ)	POWER		CURRENT (A)	SPEED (d/d)	AIR FLOW (m3/h)	IMPELLER DIAME-	CIRLCE DIAMETER(mm)	WINDTH (mm)		
		HP	KW								
FDB-P-30	230/380/50	1/3	0,25	0,81	1400	3000	300	330	220		
FDB-P-35	230/380/50	1/3	0,25	0,81	1400	4000	350	380	220		
FDB-P-40	230/380/50	1/3	0,25	0,81	1400	5000	400	430	220		
FDB-P-45	230/380/50	1/2	0,37	1,15	1400	6000	450	480	220		
FDB-P-50	230/380/50	1/2	0,37	1,15	1400	7500	500	530	300		
FDB-P-55	230/380/50	3/4	0,55	1,60	1400	9000	550	580	300		
FDB-P-60	230/380/50	1	0,75	2,10	1400	11000	600	630	300		
FDB-P-65	230/380/50	1,5	1,1	2,60	1400	12500	650	680	300		
FDB-P-70	230/380/50	1,5	1,1	2,60	1400	14000	700	730	340		
FDB-P-75	230/380/50	2	1,5	3,50	1400	16000	750	780	340		
FDB-P-80	230/380/50	3	2,2	5,00	1400	20000	800	830	340		
FDB-P-90	380/50	5,5	4	8,20	1400	30000	900	930	390		
FDB-P-100	380/50	7,5	5,5	11,20	1400	40000	1000	1030	450		

## FKDB

LARGE SIZE BELT DRIVEN  
SMOKE EXHAUST AND PRESSURIZING FANS  
(EXTERNAL MOTOR, METAL WINGS)



MODEL	VOLTAGE (VOLT/HZ)	POWER		CURRENT (A)	SPEED (d/d)	AIR FLOW (m3/h)	IMPELLER DIAME-	CIRLCE DIAMETER(mm)	WINDTH (mm)		
		HP	KW								
FKDB-30	230/380/50	1/2	0,37	1,15	1400	3500	300	330	400		
FKDB-35	230/380/50	1/2	0,37	1,15	1400	4000	350	380	400		
FKDB-40	230/380/50	1/2	0,37	1,15	1400	5000	400	430	450		
FKDB-45	230/380/50	1/2	0,37	1,15	1400	6000	450	480	450		
FKDB-50	230/380/50	1	0,75	2,10	1400	8000	500	530	450		
FKDB-55	230/380/50	1	0,75	2,10	1400	10000	550	580	550		
FKDB-60	230/380/50	1,5	1,1	2,60	1400	12000	600	630	550		
FKDB-65	230/380/50	2	1,5	3,50	1400	14000	650	680	650		
FKDB-70	230/380/50	3	2,2	5,00	1400	16000	700	730	650		
FKDB-75	230/380/50	4	3	6,60	1400	20000	750	780	750		
FKDB-80	380/50	5,5	4	8,20	1400	25000	800	830	750		
FKDB-90	380/50	7,5	5,5	11,20	1400	35000	900	930	800		
FKDB-100	380/50	7,5	5,5	11,20	1400	40000	1000	1030	850		
FKDB-112	380/50	10	7,5	15,40	1400	45000	1120	1150	900		
FKDB-125	380/50	10	7,5	15,40	1400	50000	1250	1280	1000		

## FKDB-P

LARGE SIZE BELT DRIVEN  
SMOKE EXHAUST AND PRESSURIZING FANS  
(EXTERNAL MOTOR, PLASTIC WINGS)



MODEL	VOLTAGE (VOLT/HZ)	POWER		CURRENT (A)	SPEED (d/d)	AIR FLOW (m3/h)	IMPELLER DIAME-	CIRLCE DIAMETER(mm)	WINDTH (mm)		
		HP	KW								
FKDB-P-30	230/380/50	1/3	0,25	0,81	1400	3000	300	330	400		
FKDB-P-35	230/380/50	1/3	0,25	0,81	1400	4000	350	380	400		
FKDB-P-40	230/380/50	1/3	0,25	0,81	1400	5500	400	430	450		
FKDB-P-45	230/380/50	1/2	0,37	1,15	1400	6500	450	480	450		
FKDB-P-50	230/380/50	1/2	0,37	1,15	1400	7500	500	530	450		
FKDB-P-55	230/380/50	3/4	0,55	1,60	1400	9000	550	580	550		
FKDB-P-60	230/380/50	1	0,75	2,10	1400	11000	600	630	550		
FKDB-P-65	230/380/50	1,5	1,1	2,60	1400	12500	650	680	650		
FKDB-P-70	230/380/50	1,5	1,1	2,60	1400	14000	700	730	650		
FKDB-P-75	230/380/50	2	1,5	3,50	1400	16000	750	780	750		
FKDB-P-80	230/380/50	3	2,2	5,00	1400	20000	800	830	750		
FKDB-P-90	380/50	5,5	4	8,20	1400	35000	900	930	800		
FKDB-P-100	380/50	7,5	5,5	11,20	1400	42000	1000	1030	850		



## F4-KY

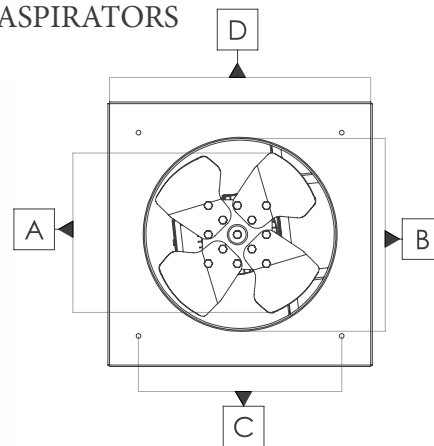
4 WINGS ROUND AXIAL ASPIRATORS  
(EXTERNAL MOTOR)

MODEL	VOLTAGE (VOLT/Hz)	POWER		CURRENT (A)	SPEED (d/d)	AIR FLOW (m3/h)		
		HP	KW					
F4-KY-300	230/380/50	1/2	0,37	1,15	1400	3500		
F4-KY-350	230/380/50	1/2	0,37	1,15	1400	4000		
F4-KY-400	230/380/50	1/2	0,37	1,15	1400	5000		
F4-KY-450	230/380/50	1/2	0,37	1,15	1400	6000		
F4-KY-500	230/380/50	1	0,75	2,10	1400	8000		
F4-KY-550	230/380/50	1	0,75	2,10	1400	10000		
F4-KY-600	230/380/50	1,5	1,1	2,60	1400	12000		
F4-KY-650	230/380/50	2	1,5	3,50	1400	14000		
F4-KY-700	230/380/50	3	2,2	5,00	1400	16000		
F4-KY-750	230/380/50	4	3	6,60	1400	20000		
F4-KY-800	380/50	5,5	4	8,20	1400	25000		
F4-KY-900	380/50	7,5	5,5	11,20	1400	35000		
F4-KY-1000	380/50	7,5	5,5	11,20	1400	40000		
F4-KY-1120	380/50	10	7,5	15,40	1400	50000		
F4-KY-1250	380/50	10	7,5	15,40	1400	55000		



## F4-KK

4 WINGS SQUARE AXIAL ASPIRATORS  
(EXTERNAL MOTOR)



MODEL	A (mm)	B (mm)	C (mm)	D (mm)
F4-KK-300	300	330	320	400
F4-KK-350	350	380	370	450
F4-KK-400	400	430	420	500
F4-KK-450	450	480	470	550
F4-KK-500	500	530	550	650
F4-KK-550	550	580	600	700
F4-KK-600	600	630	650	750
F4-KK-650	650	680	700	800
F4-KK-700	700	730	750	850
F4-KK-750	750	780	800	900
F4-KK-800	800	830	850	950
F4-KK-900	900	930	1000	1100
F4-KK-1000	1000	1030	1100	1200
F4-KK-1120	1120	1150	1250	1350
F4-KK-1250	1250	1280	1350	1500

MODEL	VOLTAGE (VOLT/Hz)	POWER		CURRENT (A)	SPEED (d/d)	AIR FLOW (m3/h)		
		HP	KW					
F4-KK-300	230/380/50	1/2	0,37	1,15	1400	3500		
F4-KK-350	230/380/50	1/2	0,37	1,15	1400	4000		
F4-KK-400	230/380/50	1/2	0,37	1,15	1400	5000		
F4-KK-450	230/380/50	1/2	0,37	1,15	1400	6000		
F4-KK-500	230/380/50	1	0,75	2,10	1400	8000		
F4-KK-550	230/380/50	1	0,75	2,10	1400	10000		
F4-KK-600	230/380/50	1,5	1,1	2,60	1400	12000		
F4-KK-650	230/380/50	2	1,5	3,50	1400	14000		
F4-KK-700	230/380/50	3	2,2	5,00	1400	16000		
F4-KK-750	230/380/50	4	3	6,60	1400	20000		
F4-KK-800	380/50	5,5	4	8,20	1400	25000		
F4-KK-900	380/50	7,5	5,5	11,20	1400	35000		
F4-KK-1000	380/50	7,5	5,5	11,20	1400	40000		
F4-KK-1120	380/50	10	7,5	15,40	1400	50000		
F4-KK-1250	380/50	10	7,5	15,40	1400	55000		



## F7-KY

7 WINGS ROUND AXIAL ASPIRATORS  
(EXTERNAL MOTOR)

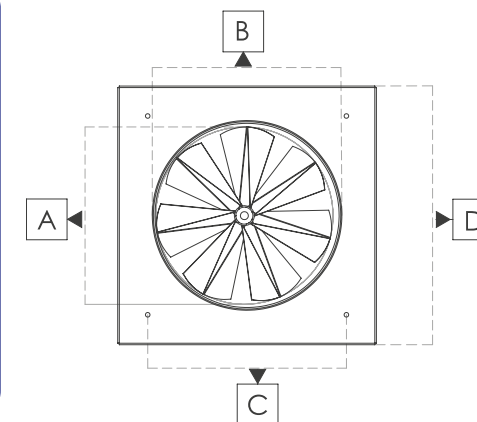
MODEL	VOLTAGE (VOLT/Hz)	POWER		CURRENT (A)	SPEED (d/d)	AIR FLOW (m3/h)		
		HP	KW					
F7 KY-300	230/380/50	1/3	0,25	0,81	1400	2700		
F7 KY-350	230/380/50	1/3	0,25	0,81	1400	3000		
F7 KY-400	230/380/50	1/3	0,25	0,81	1400	3500		
F7 KY-450	230/380/50	1/3	0,25	0,81	1400	4000		
F7 KY-500	230/380/50	1/2	0,37	1,15	1400	6000		
F7 KY-550	230/380/50	3/4	0,55	1,60	1400	7500		
F7 KY-600	230/380/50	3/4	0,55	1,60	1400	9500		
F7 KY-650	230/380/50	1,5	1,1	2,60	1400	11000		
F7 KY-700	230/380/50	2	1,5	3,50	1400	12000		
F7 KY-750	230/380/50	3	2,2	5,00	1400	14000		
F7 KY-800	230/380/50	4	3	6,60	1400	18000		



## F7-KK

7 WINGS SQUARE AXIAL ASPIRATORS  
(EXTERNAL MOTOR)

MODEL	A (mm)	B (mm)	C (mm)	D (mm)
F7 KK-300	300	330	320	400
F7 KK-350	350	380	370	450
F7 KK-400	400	430	420	500
F7 KK-450	450	480	470	550
F7 KK-500	500	530	550	650
F7 KK-550	550	580	600	700
F7 KK-600	600	630	650	750
F7 KK-650	650	680	700	800
F7 KK-700	700	730	750	850
F7 KK-750	750	780	800	900
F7 KK-800	800	830	850	950



MODEL	VOLTAGE (VOLT/Hz)	POWER		CURRENT (A)	SPEED (d/d)	AIR FLOW (m3/h)		
		HP	KW					
F7 KK-300	230/380/50	1/3	0,25	0,81	1400	2700		
F7 KK-350	230/380/50	1/3	0,25	0,81	1400	3000		
F7 KK-400	230/380/50	1/3	0,25	0,81	1400	3500		
F7 KK-450	230/380/50	1/3	0,25	0,81	1400	4000		
F7 KK-500	230/380/50	1/2	0,37	1,15	1400	6000		
F7 KK-550	230/380/50	3/4	0,55	1,60	1400	7500		
F7 KK-600	230/380/50	3/4	0,55	1,60	1400	9500		
F7 KK-650	230/380/50	1,5	1,1	2,60	1400	11000		
F7 KK-700	230/380/50	2	1,5	3,50	1400	12000		
F7 KK-750	230/380/50	3	2,2	5,00	1400	14000		
F7 KK-800	230/380/50	4	3	6,60	1400	18000		



## FHP-Y

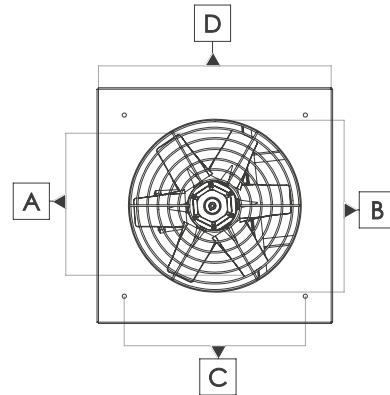
ROUND AXIAL EXHAUSTERS  
(EXTERNAL MOTOR, PLASTIC IMPELLER)



MODEL	VOLTAGE (VOLT/HZ)	POWER		CURRENT (A)	SPEED (d/d)	AIR FLOW (m3/h)	SOUND (DBA)		
		HP	KW						
FHP-Y-300	230/380/50	1/3	0,25	0,81	1400	3000	67		
FHP-Y-350	230/380/50	1/3	0,25	0,81	1400	4000	68		
FHP-Y-400	230/380/50	1/3	0,25	0,81	1400	5000	69		
FHP-Y-450	230/380/50	1/2	0,37	1,15	1400	6000	70		
FHP-Y-500	230/380/50	1/2	0,37	1,15	1400	7500	70		
FHP-Y-550	230/380/50	3/4	0,55	1,60	1400	9000	73		
FHP-Y-600	230/380/50	1	0,75	2,10	1400	11000	75		
FHP-Y-650	230/380/50	1,5	1,1	2,60	1400	12500	80		
FHP-Y-700	230/380/50	1,5	1,1	2,60	1400	14000	83		
FHP-Y-750	230/380/50	2	1,5	3,50	1400	16000	84		
FHP-Y-800	230/380/50	3	2,2	5,00	1400	20000	85		

## FHP-K

SQUARE AXIAL EXHAUSTERS  
(EXTERNAL MOTOR, PLASTIC IMPELLER)



MODEL	A (mm)	B (mm)	C (mm)	D (mm)
FHP-K-300	300	330	320	400
FHP-K-350	350	380	370	450
FHP-K-400	400	430	420	500
FHP-K-450	450	480	470	550
FHP-K-500	500	530	550	650
FHP-K-550	550	580	600	700
FHP-K-600	600	630	650	750
FHP-K-650	650	680	700	800
FHP-K-700	700	730	750	850
FHP-K-750	750	780	800	900
FHP-K-800	800	830	850	950
FHP-K-900	900	930	1000	1100
FHP-K-1000	1000	1030	1100	1200

MODEL	VOLTAGE (VOLT/HZ)	POWER		CURRENT (A)	DEVİR (d/d)	AIR FLOW (m3/h)	SOUND (DBA)		
		HP	KW						
FHP-K-300	230/380/50	1/3	0,25	0,81	1400	3000	67		
FHP-K-350	230/380/50	1/3	0,25	0,81	1400	4000	68		
FHP-K-400	230/380/50	1/3	0,25	0,81	1400	5000	69		
FHP-K-450	230/380/50	1/2	0,37	1,15	1400	6000	70		
FHP-K-500	230/380/50	1/2	0,37	1,15	1400	7500	70		
FHP-K-550	230/380/50	3/4	0,55	1,60	1400	9000	73		
FHP-K-600	230/380/50	1	0,75	2,10	1400	11000	75		
FHP-K-650	230/380/50	1,5	1,1	2,60	1400	12500	80		
FHP-K-700	230/380/50	1,5	1,1	2,60	1400	14000	83		
FHP-K-750	230/380/50	2	1,5	3,50	1400	16000	84		
FHP-K-800	230/380/50	3	2,2	5,00	1400	20000	85		
FHP-K-900	380/50	5,5	4	8,20	1400	35000	88		
FHP-K-1000	380/50	7,5	5,5	11,20	1400	42000	91		



## FA 4

NON MOTORIZED AXIAL EXHAUSTERS (4 WINGS)

MODEL	POWER		SPEED (d/d)	AIR FLOW (m3/h)			
	HP	KW					
FA 4-30	1/2	0,37	1400	3500			
FA 4-35	1/2	0,37	1400	4000			
FA 4-40	1/2	0,37	1400	5000			
FA 4-45	1/2	0,37	1400	6000			
FA 4-50	1	0,75	1400	8000			
FA 4-55	1	0,75	1400	10000			
FA 4-60	1,5	1,1	1400	12000			
FA 4-65	2	1,5	1400	14000			
FA 4-70	3	2,2	1400	16000			
FA 4-75	4	3	1400	20000			
FA 4-80	5,5	4	1400	25000			
FA 4-90	7,5	5,5	1400	35000			
FA 4-100	7,5	5,5	1400	40000			
FA 4-112	10	7,5	1400	50000			
FA 4-125	10	7,5	1400	55000			



## FA 7

NON MOTORIZED AXIAL EXHAUSTERS (7 WINGS)

MODEL	POWER		SPEED (d/d)	AIR FLOW (m3/h)			
	HP	KW					
FA 7-30	1/3	0,25	1400	2750			
FA 7-35	1/3	0,25	1400	3000			
FA 7-40	1/3	0,25	1400	3500			
FA 7-45	1/3	0,25	1400	4000			
FA 7-50	1/2	0,37	1400	6000			
FA 7-55	3/4	0,55	1400	7500			
FA 7-60	3/4	0,55	1400	9500			
FA 7-65	1,5	1,1	1400	11000			
FA 7-70	2	1,5	1400	12000			
FA 7-75	3	2,2	1400	14000			
FA 7-80	4	3	1400	18000			



## FA 5

NON MOTORIZED AXIAL EXHAUSTERS(5 PLASTIC WINGS)

MODEL	POWER		SPEED (d/d)	AIR FLOW (m3/h)			
	HP	KW					
FA 5-30	1/3	0,25	1400	3000			
FA 5-35	1/3	0,25	1400	4000			
FA 5-40	1/3	0,25	1400	5500			
FA 5-45	1/2	0,37	1400	7000			
FA 5-50	3/4	0,55	1400	8000			
FA 5-55	3/4	0,55	1400	9000			
FA 5-60	1	0,75	1400	11000			
FA 5-65	1,5	1,1	1400	12500			
FA 5-70	1,5	1,1	1400	14000			
FA 5-75	2	1,5	1400	16000			
FA 5-80	3	2,2	1400	20000			
FA 5-90	5,5	4	1400	35000			
FA 5-100	7,5	5,5	1400	42000			





## FAGS-T

TRIPHASE ALUMINIUM BODY CENTRIFUGALS  
(FORWARD CURVED)



MODEL	IMPELLER DIAMETER (mm)	OUTLET A(mm)	INLET E (mm)	VOLTAGE (VOLT/HZ)	POWER		CURRENT (A)	SPEED (d/d)	AIR FLOW (m3/h)	PRESSURE (mm/ss)	SOUND (DBA)	
					HP	KW						
FAGS T-1	140-70	64x87	ø125	380/50	1/3	0,25	0,67	2800	800	27	25	
FAGS T-2	160-90	108x110	ø127	380/50	1/2	0,37	1,05	2800	1700	36	30	
FAGS T-3	180-90	106x108	ø144	380/50	3/4	0,55	1,27	2800	2100	51	34	
FAGS T-4	225-90	127x108	ø204	380/50	1	0,75	1,70	2800	2600	61	37	
FAGS T-4	225-102	127x108	ø204	380/50	1,5	1,1	2,30	2800	3100	61	40	
FAGS T-5	250-112	ø162	ø210	380/50	2	1,5	3,30	2800	3600	71	44	
FAGS T-5	250-118	ø162	ø210	380/50	3	2,2	4,48	2800	4150	91	49	
FAGS T-6	268-112	ø155	ø265	380/50	3	2,2	4,48	2800	4550	121	51	
FAGS T-6	268-118	ø155	ø265	380/50	4	3	5,80	2800	150	151	55	
FAGS T-7	300-112	ø165	ø295	380/50	5,5	4	7,40	2800	6200	172	60	
FAGS T-7	300-118	ø165	ø295	380/50	7,5	5,5	10,30	2800	7150	212	65	
FAGS T-8	315-112	ø165	ø310	380/50	7,5	5,5	10,30	2800	8100	232	69	
FAGS T-8	315-122	ø165	ø310	380/50	10	7,5	13,60	2800	10150	263	75	

## FAGS-M

MONOPHASE ALUMINIUM BODY CENTRIFUGALS  
(FORWARD CURVED)



MODEL	IMPELLER DIAMETER(mm)	OUTLET A(mm)	INLET E (mm)	VOLTAGE (VOLT/HZ)	POWER		CURRENT (A)	SPEED (d/d)	AIR FLOW (m3/h)	PRESSURE (mm/ss)	SOUND (DBA)	
					HP	KW						
FAGS M-1	140-70	64x87	ø125	230/50	1/3	0,25	1,60	2800	660	26	25	
FAGS M-2	160-90	108x110	ø127	230/50	1/2	0,37	2,50	2800	1650	35	30	
FAGS M-3	180-90	106x108	ø144	230/50	3/4	0,55	3,00	2800	1950	50	34	
FAGS M-4	225-90	127x108	ø204	230/50	1	0,75	5,00	2800	2450	60	37	
FAGS M-4	225-102	127x108	ø204	230/50	1,5	1,1	7,00	2800	2950	60	40	
FAGS M-5	250-112	ø162	ø210	230/50	2	1,5	9,80	2800	3420	70	44	
FAGS M-5	250-118	ø162	ø210	230/50	3	2,2	13,50	2800	3950	90	49	
FAGS M-6	268-112	ø155	ø265	230/50	3	2,2	13,50	2800	4440	120	51	
FAGS M-6	268-118	ø155	ø265	230/50	4	3	17,70	2800	5000	150	55	

## FAGS-EK

ECONOMIC ALUMINIUM BODY CENTRIFUGALS  
(FORWARD CURVED)



MODEL	VOLTAGE (VOLT/HZ)	POWER		CURRENT (A)	SPEED (d/d)	AIR FLOW (m3/h)	PRESSURE (mm/ss)	SOUND (DBA)		
		HP	KW							
FAGS-EK-1	380/50	1/2	0,37	2,12	2800	850	29	65		
FAGS-EK-2	380/50	1/2	0,37	2,12	2800	1650	38	70		
FAGS-EK-3	380/50	3/4	0,55	2,52	2800	2000	53	73		

## FAGS-KT

TRIPHASE ALUMINIUM BODY  
HIGH PRESSURE CENTRIFUGAL BLOWERS



MODEL	OUTLET A(mm)	INLET E (mm)	VOLTAGE (VOLT/HZ)	POWER		CURRENT (A)	SPEED (d/d)	AIR FLOW (m3/h)	PRESSURE (mm/ss)	SOUND (DBA)	
				HP	KW						
FAGS KT-1	65,5	94	380/50	1/2	0,37	1,05	2850	1250	200	28	
FAGS KT-2	81,5	124	380/50	1	0,75	1,70	2850	2100	240	33	
FAGS KT-3	95	149	380/50	2	1,5	3,30	2850	2050	300	43	
FAGS KT-4	120	154	380/50	3	2,2	4,40	2850	3550	350	50	
FAGS KT-4-01	120	154	380/50	4	3	5,50	2850	4000	380	55	
FAGS KT-5	130	162	380/50	5,5	4	7,40	2850	4200	400	35	
FAGS KT-5-01	130	162	380/50	7,5	5,5	10,30	2850	4600	400	70	

## FAGS-KM

MONOPHASE ALUMINIUM BODY  
HIGH PRESSURE CENTRIFUGAL BLOWERS



MODEL	OUTLET A(mm)	INLET E (mm)	VOLTAGE (VOLT/HZ)	POWER		CURRENT (A)	SPEED (d/d)	AIR FLOW (m3/h)	PRESSURE (mm/ss)	SOUND (DBA)	
				HP	KW						
FAGS KM-1	65,5	94	230/50	1/2	0,37	2,50	2850	1200	200	30	
FAGS KM-2	81,5	124	230/50	1	0,75	5,00	2850	2000	240	34	
FAGS KM-3	95	149	230/50	2	1,5	9,80	2850	3000	300	45	
FAGS KM-4	120	154	230/50	3	2,2	13,50	2850	3500	350	52	
FAGS KM-4-01	120	154	230/50	4	3	17,70	2850	4000	380	58	

## FBF

ALUMINIUM BODY  
BALOON INFLATION FANS



MODEL	FAN DIMENSIONS	POWER		SPEED (d/d)	AIR FLOW (m3/h)	PRESSURE (mm/ss)	INLET (mm)	OUTLET (mm)		
		HP	KW							
FBF	225x50	3/4	0,55	2800	--	48	225	85		



## FSG-SK

TRIPHASE FORWARD CURVED CENTRIFUGALS  
(EXTERNAL MOTOR, STEEL BODY)



MODEL	IMPELLER DIAMETER(mm)	VOLTAGE (VOLT/Hz)	POWER		CURRENT (A)	SPEED (d/d)	AIR FLOW (m3/h)	PRESSURE (mm/ss)	SOUND (DBA)
			HP	KW					
FSG SK-T1	140-70	380/50	1/3	0,25	0,67	2850	750	25	26
FSG SK-T2	160-90	380/50	1/2	0,37	1,05	2850	1500	35	32
FSG SK-T3	180-190	380/50	3/4	0,55	1,27	2850	2000	45	36
FSG SK-T4	225-90	380/50	1	0,75	1,70	2850	2500	55	39
FSG SK-T4	225-102	380/50	1,5	1,1	2,30	2850	3000	60	41
FSG SK-T5	250-112	380/50	2	1,5	3,30	2850	3500	70	46
FSG SK-T5	250-118	380/50	3	2,2	4,48	2850	4000	85	50
FSG SK-T6	268-112	380/50	3	2,2	4,48	2850	4500	120	52
FSG SK-T6	268-118	380/50	4	3	5,80	2850	5000	150	56
FSG SK-T7	300-112	380/50	5,5	4	7,40	2850	6000	170	62
FSG SK-T7	300-118	380/50	7,5	5,5	10,30	2850	7000	200	67
FSG SK-T8	315-112	380/50	7,5	5,5	10,30	2850	8500	230	70
FSG SK-T8	315-122	380/50	10	7,5	13,60	2850	10000	260	76

## FSG-SK

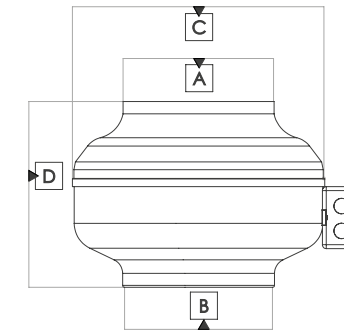
MONOPHASE FORWARD CURVED CENTRIFUGALS  
(EXTERNAL MOTOR, STEEL BODY)



MODEL	IMPELLER DIAMETER(mm)	VOLTAGE (VOLT/Hz)	POWER		CURRENT (A)	SPEED (d/d)	AIR FLOW (m3/h)	PRESSURE (mm/ss)	SOUND (DBA)
			HP	KW					
FSG SK-M1	140-70	230/50	1/3	0,25	1,60	2850	700	25	27
FSG SK-M2	160-90	230/50	1/2	0,37	2,50	2850	1450	35	33
FSG SK-M3	180-190	230/50	3/4	0,55	3,50	2850	1950	45	37
FSG SK-M4	225-90	230/50	1	0,75	5,00	2850	2450	55	40
FSG SK-M4	225-102	230/50	1,5	1,1	7,00	2850	2900	60	42
FSG SK-M5	250-112	230/50	2	1,5	9,80	2850	3400	70	47
FSG SK-M5	250-118	230/50	3	2,2	13,50	2850	3900	85	52
FSG SK-M6	268-112	230/50	3	2,2	13,50	2850	4400	120	54
FSG SK-M6	268-118	230/50	4	3	17,70	2850	4900	150	58

## LKT

BACWARD CURVED  
ROUND IN LINE DUCT FANS

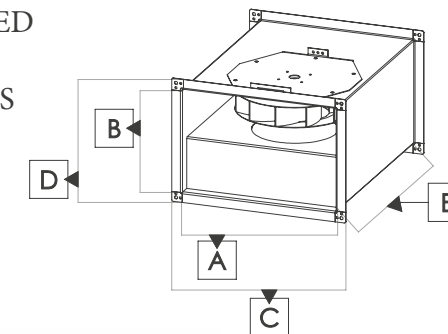


MODEL	VOLTAGE (VOLT/Hz)	POWER (WATT)	CURRENT (A)	SPEED (d/d)	AIR FLOW (m3/h)	SOUND (DBA)
LKT 100-A	230/50	72	0,32	2050	200	40
LKT 100-B	230/50	72	0,33	2540	255	46
LKT 125-A	230/50	72	0,36	1750	250	43
LKT 125-B	230/50	72	0,37	2480	330	45
LKT 160-A	230/50	75	0,39	2420	450	47
LKT 160-B	230/50	120	0,55	2600	715	48
LKT 200-A	230/50	82	0,43	2500	760	51
LKT 200-B	230/50	160	0,74	2750	990	51
LKT 250-A	230/50	175	0,80	2560	1140	53
LKT 250 B	230/50	195	0,98	2710	1250	54
LKT 315-A	230/50	155	0,90	2670	1420	55
LKT 315-B	230/50	310	1,50	2645	1875	60
LKT 355-A	230/50	280	1,70	1350	1550	64
LKT 355-B	230/50	310	1,90	2750	2750	68

MODEL	A (mm)	B (mm)	C (mm)	D (mm)
LKT-100-A	97	97	235	180
LKT-100-B	97	97	235	180
LKT-125-A	120	120	235	185
LKT-125-B	120	120	235	185
LKT-160-A	155	155	235	200
LKT-160-B	155	155	235	200
LKT-200-A	195	195	330	220
LKT-200-B	195	195	330	220
LKT-250-A	247	247	345	235
LKT-250-B	247	247	345	235
LKT-315-A	310	310	400	300
LKT-315-B	310	310	400	300

## FDKF

BACKWARD CURVED  
RECTANGULAR  
IN LINE DUCT FANS



MODEL	A (mm)	B (mm)	C (mm)	D (mm)	E (mm)
FDKF 30-15	300	150	350	200	400
FDKF 40-20 A	400	200	450	250	500
FDKF 40-20 B	400	200	450	250	500
FDKF 50-25	500	250	550	300	560
FDKF 60-30	600	300	650	350	650
FDKF 60-35 A	600	350	650	400	760
FDKF 60-35 B	600	350	650	400	760
FDKF 70-40 A	700	400	750	450	800
FDKF 70-40 B	700	400	750	450	800
FDKF 80-50	800	500	850	550	920
FDKF 100-50	1000	500	1050	550	1050



MODEL	VOLTAGE (VOLT/Hz)	POWER (WATT)	CURRENT (A)	SPEED (d/d)	AIR FLOW (m3/h)	SOUND (DBA)
FDKF 30-15	230/50	90	0,35	2650	650	71
FDKF 40-20 A	230/50	105	0,46	2762	1000	74
FDKF 40-20 B	230/50	140	0,61	2693	1250	76
FDKF 50-25	230/50	213	0,95	2546	1900	79
FDKF 60-30	230/50	140	0,60	1400	2100	70
FDKF 60-35 A	230/50	175	0,90	1385	2800	80
FDKF 60-35 B	230/50	225	1,90	1370	3400	83
FDKF 70-40 A	230/50	435	2,70	1320	4500	83
FDKF 70-40 B	230/50	645	3,00	1378	5900	84
FDKF 80-50	400/50	815	2,50	1375	8000	86
FDKF 100-50	400/50	2200	3,00	1360	10000	87

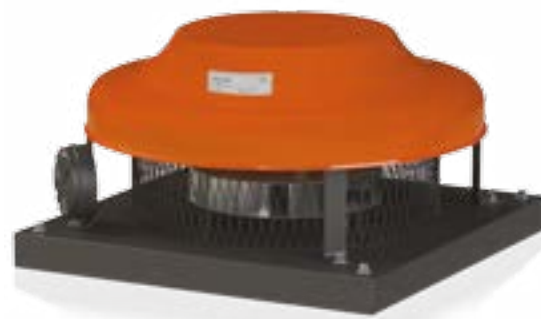
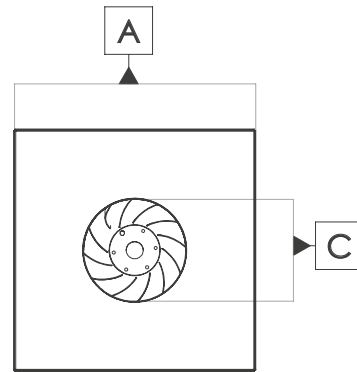
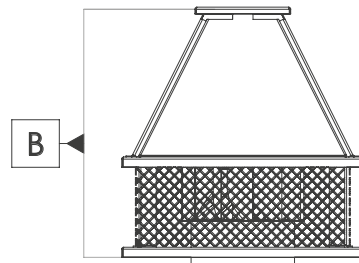
## FBCF

CENTRIFUGAL ROOF FANS  
(HORIZONTAL OUTLET)



MODEL	VOLTAGE (VOLT/Hz)	POWER		CURRENT (A)	SPEED (d/d)	AIR FLOW (m3/h)		
		HP	KW					
FBCF-0,5	230/380/50	1/2	0,37	1,15	1400	2000		
FBCF-1	230/380/50	1	0,75	2,10	1400	3500		
FBCF-1,5	230/380/50	1,5	1,1	2,60	1400	4000		
FBCF-2	230/380/50	2	1,5	3,50	1400	5000		
FBCF-3	230/380/50	3	2,2	5,00	1400	7000		
FBCF-4	230/380/50	4	3	6,60	1400	8000		
FBCF-5,5	380/50	5,5	4	8,20	1400	10000		
FBCF-7,5	380/50	7,5	5,5	11,20	1400	12000		
FBCF-10	380/50	10	7,5	15,40	1400	15000		
FBCF-15	380/50	15	11	21,00	1400	20000		
FBCF-20	380/50	20	15	29,80	1400	25000		
FBCF-25	380/50	25	18,5	34,50	1400	30000		
FBCF-30	380/50	30	22	42,50	1400	35000		

MODEL	A (mm)	B (mm)	C (mm)
FBCF-0,5	500	500	200
FBCF-1	550	550	220
FBCF-1,5	600	600	240
FBCF-2	650	600	260
FBCF-3	700	650	300
FBCF-4	800	650	325
FBCF-5,5	850	700	350
FBCF-7,5	900	800	380
FBCF-10	950	900	420



## FCF

CENTRIFUGAL ROOF FANS(HORIZONTAL OUTLET)

MODEL	VOLTAGE (VOLT/Hz)	POWER (WATT)	CURRENT (A)	SPEED (d/d)	AIR FLOW (m3/h)	SOUND (DBA)		
FCF 190	230/50	76	0,37	2500	410	45		
FCF 220	230/50	145	0,63	2600	950	53		
FCF 250	230/50	200	0,87	2510	1300	54		
FCF 315	230/50	145	0,68	2650	1870	55		
FCF 355	230/50	195	0,85	1350	2750	66		
FCF 400	230/50	350	1,75	1410	3750	68		
FCF 450	230/50	600	2,80	1390	6290	73		
FCF 500	400/50	900	2,56	1375	9000	73		
FCF 560	400/50	1500	2,98	1360	12000	80		

## FKCF

AXIAL ROOF FANS(HORIZONTAL OUTLET)

MODEL	VOLTAGE (VOLT/Hz)	POWER		CURRENT (A)	SPEED (d/d)	AIR FLOW (m3/h)	SOUND (DBA)		
		HP	KW						
FKCF-300	380/50	1/2	0,37	1,15	1400	3000	55		
FKCF-350	380/50	1/2	0,37	1,15	1400	4000	59		
FKCF-400	380/50	1/2	0,37	1,15	1400	5000	62		
FKCF-450	380/50	1/2	0,37	1,15	1400	6000	65		
FKCF-500	380/50	3/4	0,55	1,60	1400	8000	62		
FKCF-550	380/50	1	0,75	2,10	1400	10000	63		
FKCF-600	380/50	1	0,75	2,10	1400	12000	63		
FKCF-650	380/50	1,5	1,1	2,60	1400	14000	65		
FKCF-700	380/50	2	1,5	3,50	1400	16000	68		
FKCF-750	380/50	3	2,2	5,00	1400	20000	72		
FKCF-800	380/50	3	2,2	5,00	1400	25000	72		
FKCF-900	380/50	4	3	6,60	1400	35000	76		
FKCF-1000	380/50	5,5	4	8,20	1400	40000	83		
FKCF-1120	380/50	7,5	5,5	11,20	1400	45000	95		
FKCF-1250	380/50	10	7,5	15,40	1400	50000	98		



## FACF

AXIAL ROOF FANS(HORIZONTAL OUTLET)

MODEL	VOLTAGE (VOLT/Hz)	POWER		CURRENT (A)	SPEED (d/d)	AIR FLOW (m3/h)	SOUND (DBA)		
		HP	KW						
FACF 300	230/380/50	1/4	0,18	1,20	1430	1800	55		
FACF 350	230/380/50	1/4	0,18	1,10	1360	2600	59		
FACF 400	230/380/50	1/3	0,25	1,20	1400	4500	62		
FACF 450	230/380/50	1/2	0,37	1,22	1375	6500	66		
FACF 500	230/380/50	3/4	0,55	1,60	1350	8500	62		
FACF 550	230/380/50	1	0,75	2,10	1450	10000	62		
FACF 600	230/380/50	1	0,75	2,10	1450	12000	63		
FACF 650	230/380/50	1,5	1,1	2,60	1450	14000	65		
FACF 700	230/380/50	2	1,5	3,50	1450	16000	68		
FACF 750	230/380/50	3	2,2	5,00	1450	18000	72		
FACF 800	230/380/50	3	2,2	5,00	1450	22000	72		
FACF 900	380/50	4	3	6,60	1400	30000	77		
FACF 1000	380/50	5,5	4	8,20	1400	40000	83		







## DRPKT

AXIAL IN LINE DUCT FANS  
WITH EXTERNAL ROTOR MOTOR

MODEL	VOLTAGE (VOLT/Hz)	POWER (WATT)	CURRENT (A)	SPEED (d/d)	AIR FLOW (m3/h)	SOUND (DBA)	
DRPKT-150	230/50	80	0,32	2800	650	68	
DRPKT-160	230/50	85	0,32	2750	750	69	
DRPKT-200	230/50	90	0,33	2770	850	70	
DRPKT-250	230/50	120	0,51	2685	1800	73	
DRPKT-300	230/50	160	0,65	2650	2500	75	
DRPKT-350	230/50	240	1,08	2670	4200	78	

## PAKF

AXIAL LARGE IN LINE DUCT CIRCULATION FANS  
(GREENHOUSE FANS)

MODEL	VOLTAGE (VOLT/Hz)	POWER (WATT)	CURRENT (A)	SPEED (d/d)	AIR FLOW (m3/h)	SOUND (DBA)		
PAKF-250-A2	230/380/50	190	0,88	2800	1850	72		
PAKF -250	230/380/50	110	1,08	1400	1150	54		
PAKF-300-2A	230/380/50	350	0,96	2800	3200	74		
PAKF -300	230/380/50	150	1,20	1400	2100	55		
PAKF-350	230/380/50	180	1,10	1400	3400	59		
PAKF-400	230/380/50	200	1,20	1400	4700	62		
PAKF-450	230/380/50	280	1,22	1400	5700	66		
PAKF-500	230/380/50	335	1,01	1400	7200	70		
PAKF-550	230/380/50	375	1,02	1400	7600	72		
PAKF-600	230/380/50	450	1,02	1400	8300	72		



## PKT

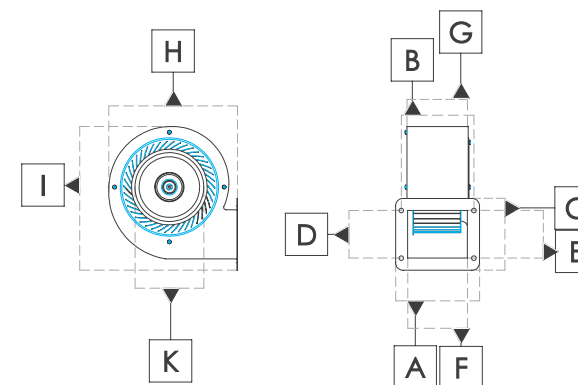
GALVANIZED  
IN LINE DUCT FANS

MODEL	VOLTAGE (VOLT/Hz)	POWER (WATT)	CURRENT (A)	SPEED (d/d)	AIR FLOW (m3/h)	SOUND (DBA)	
PKT-100	230/50	30	0,16	2800	120	48	
PKT-120	230/50	30	0,17	2800	200	50	
PKT130	230/50	40	0,40	2800	250	54	
PKT-150	230/50	45	0,15	2600	300	56	
PKT-200	230/50	40	0,50	2600	600	62	
PKT-250	230/50	50	0,38	1400	750	57	
PKT-300	230/50	100	0,32	2600	1650	62	
PKT-350	230/50	125	0,57	2600	2350	74	



FORWARD CURVED RADIAL FANS  
(EXTERNAL ROTOR MOTOR, METAL BODY)

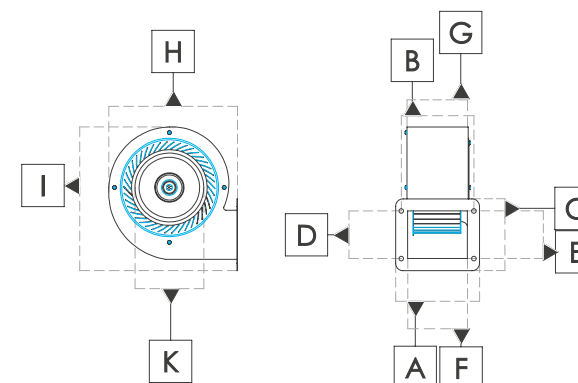
MODEL	VOLTAGE (VOLT/Hz)	POWER (WATT)	CURRENT (A)	SPEED (d/d)	AIR FLOW (m3/h)	SOUND (DBA)	
DROBS 125-60	230/50	125	0,52	2600	380	60	
DRTOS 140-60	230/50	150	0,60	2450	500	62	
DRBTMS 140-60	230/50	165	0,83	2450	580	68	
DRBTMS 160-60	230/50	170	1,08	2200	650	70	
DRBTMS 180-60	230/50	250	1,20	2200	800	71	
DRBTMS 180-70	230/50	320	1,30	2450	900	72	



MODEL	A	B	C	D	E	F	G	H	I	K
DROBS 125-60	115	100	99	68	66	78	90	166	195	122
DRTOS 140-60	140	112	140	112	98	83	94	215	240	160
DRBTMS 140-60	140	112	140	112	98	83	94	270	278	157
DRBTMS 160-60	140	112	140	112	98	83	104	270	278	173
DRBTMS 180-60	140	112	160	112	120	83	108	290	306	173
DRBTMS 180-70	145	135	160	135	118	101	120	290	320	173
DRBTMS 220-60	140	112	150	112	120	83	108	290	306	173

FORWARD CURVED RADIAL FANS  
(EXTERNAL ROTOR MOTOR, ALUMINIUM BODY)

MODEL	VOLTAGE (VOLT/Hz)	POWER (WATT)	CURRENT (A)	SPEED (d/d)	AIR FLOW (m3/h)	SOUND (DBA)	
KAGS 125-60	230/50	110	0,52	2390	270	63	
BAGS 140-60	230/50	180	0,58	2800	540	68	
BAGS 160-60	230/50	245	0,83	2150	680	72	
OAGS 140-60	230/50	125	1,08	2300	400	73	
BAGS 180-70	230/50	320	1,30	2600	760	74	



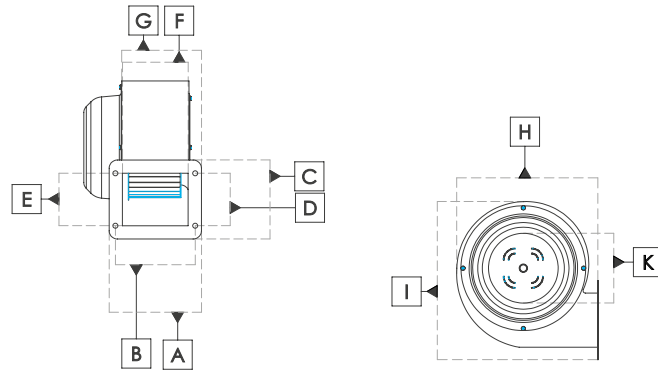
MODEL	A	B	C	D	E	F	G	H	I	K
KAGS 125-60	114	100	83	68	50	76	97	174	195	122
BAGS 140-60	153	128	120	87	83	80	94	206	220	166
BAGS 160-60	132	115	120	105	92	94	109	226	261	174
OAGS 140-60	132	115	120	105	92	94	120	226	261	174
BAGS 180-70	132	110	140	120	110	86	125	261	281	195





## DRSY BACKWARD CURVED RADIAL FANS (EXTERNAL ROTOR MOTOR, METAL BODY)

MODEL	VOLTAGE (VOLT/HZ)	POWER (WATT)	CURRENT (A)	SPEED (d/d)	AIR FLOW (m3/h)	SOUND (DBA)	
DRSY-190	230/50	120	0,55	2600	750	49	
DRSY-220	230/50	160	0,74	2750	7050	52	
DRSY-250	380/50	195	0,98	2710	1300	55	



## METAL BODY FORWARD CURVED RADIAL FANS

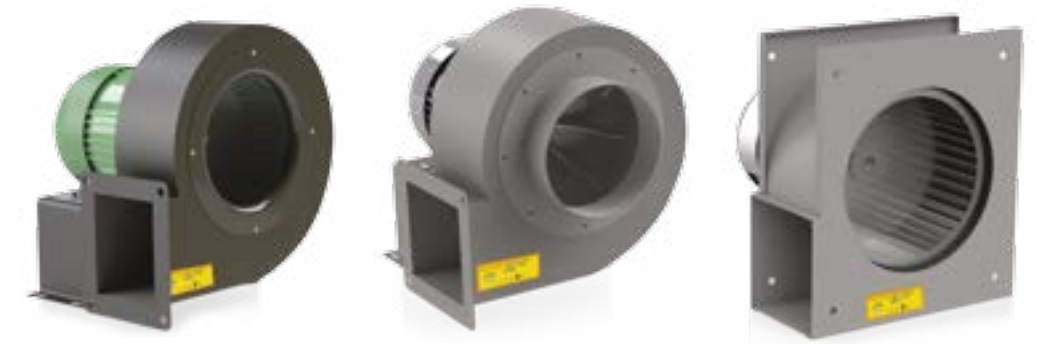
MODEL	VOLTAGE (VOLT/HZ)	POWER (WATT)	CURRENT (A)	SPEED (d/d)	AIR FLOW (m3/h)	SOUND (DBA)	
KTS 90-60	230/50	53	0,24	2450	150	58	
OBS 125-60	230/50	125	0,45	2700	350	60	
TOS 140-60	230/50	130	0,61	2350	450	61	
BTMS 140-60	230/50	140	0,62	2200	520	66	
BTMS 160-60	230/50	230	0,82	2200	620	67	
BTMS 180-60	230/50	650	1,20	2780	1250	74	
BTS 200-60 PLS FAN	230/50	125	0,56	2650	520	68	

## METAL BODY RADIAL FANS

MODEL	A	B	C	D	E	F	G	H	I	K
KTS 90-60	97	79	79	62	51	68	155	135	153	97
OBS 125-60	115	100	99	68	66	78	130	166	195	122
TOS 140-60	140	112	140	112	98	83	130	215	240	160
BTMS 140-60	140	112	140	112	98	83	140	270	278	157
BTMS 160-60	140	112	140	112	98	83	150	270	278	173
BTMS 180-60	140	112	150	112	120	83	150	290	306	173
BTMS 180-70	145	124	160	136	118	101	200	296	320	173
BTS 200-60 PLS FAN	140	112	140	112	98	83	150	270	278	173

## POBRA

METAL BODY  
OBRA SERIES  
RADIAL FANS



MODEL	AIR OUTLET DIAMETER (mm)	VOLTAGE (VOLT/HZ)	POWER (WATT)	CURRENT (A)	SPEED (d/d)	AIR FLOW (m3/h)	SOUND (DBA)	
POBRA 140-70 (2)	98X100	230/380/50	400	1,20	2800	860	68	
POBRA 160-70 (2)	98X100	230/380/50	490	2,12	2800	1150	72	
POBRA 180-70 (2)	117X100	230/380/50	600	2,54	2800	1950	75	
POBRA 140-70 (4)	98X100	230/380/50	350	1,40	1400	455	59	
POBRA 160-70 (4)	98X100	230/380/50	450	2,50	1400	670	61	
POBRA 180-70 (4)	117X100	230/380/50	550	1,18	1400	1050	63	
PSEK 180-80 M	117X100	230/50	370	1,55	2800	1750	75	
PSEK 180-80 T	117X100	380/50	370	1,43	2800	1750	74	
PKOBR-M	117X100	220/50	370	2,63	2800	1950	76	
PKOBR-T	117X100	380/50	370	1,15	2800	1950	75	

## OÇES

METAL BODY  
DOUBLE INLET FANS



MODEL	AIR OUTLET DIAMETER (mm)	VOLTAGE (VOLT/HZ)	POWER (WATT)	CURRENT (A)	SPEED (d/d)	AIR FLOW (m3/h)	SOUND (DBA)	
OÇES -M	210X135	230/50	240	1,85	1400	2000	61	
OÇES -T	210X135	380/50	240	1,74	1400	2000	61	
OÇES -M KABİNLİ	210X135	230/50	240	1,85	1400	2200	55	
OÇES -T KABİNLİ	210X135	380/50	240	1,74	1400	2200	55	

## P-HSS

STEEL BODY RADIAL FANS  
(EXTERNAL MOTOR)



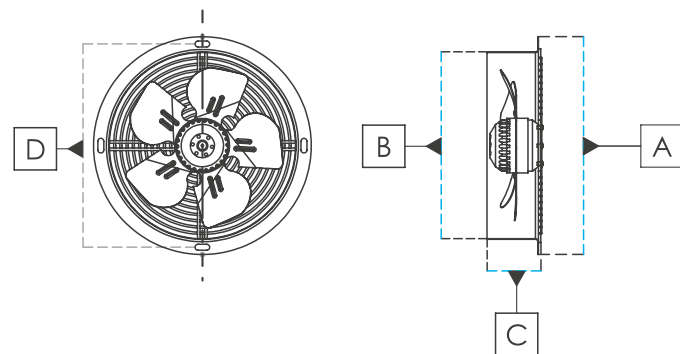
MODEL	AIR OUTLET DIAMETER (mm)	VOLTAGE (VOLT/HZ)	POWER (WATT)	CURRENT (A)	SPEED (d/d)	AIR FLOW (m3/h)	SOUND (DBA)	
P-HSS-165-70	94X115	230/50	650	1,18	2800	1350	65	
P-HSS-213-85	106X128	380/50	1100	2,30	2800	2350	75	





## PDRAF

AXIAL FANS WITH EXTERNAL ROTOR MOTOR

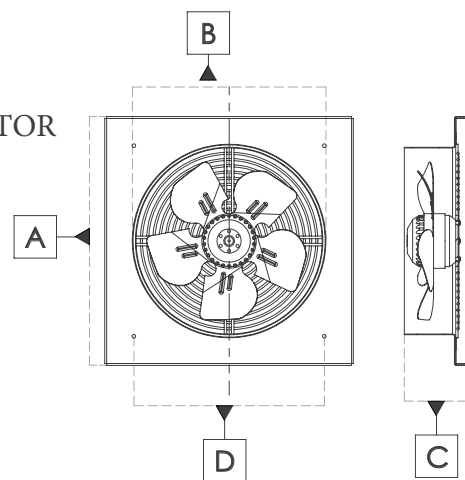


MODEL	VOLTAGE (VOLT/Hz)	POWER (WATT)	CURRENT (A)	SPEED (d/d)	AIR FLOW (m3/h)	SOUND (DBA)
PDRAF-2M-200	230/50	65	0,33	2700	850	70
PDRAF-2M-250	230/50	120	0,51	2580	1620	73
PDRAF-2M-300	230/50	145	0,65	2650	2500	75
PDRAF-2M-350	230/50	210	1,08	2670	4200	78

MODEL	A	B	C	D
PDRAF-2M-200	260	210	87	130
PDRAF-2M-250	312	265	100	144
PDRAF-2M-300	385	325	100	180
PDRAF-2M-350	430	370	100	203

## PDKAF

SQUARE TYPE AXIAL FANS  
WITH EXTERNAL ROTOR MOTOR



MODEL	A	B	C	D
PDKAF-2M-200	260	210	87	170
PDKAF-2M-250	320	260	100	220
PDKAF-2M-300	395	335	100	290
PDKAF-M-350	440	380	100	340

MODEL	VOLTAGE (VOLT/Hz)	POWER (WATT)	CURRENT (A)	SPEED (d/d)	AIR FLOW (m3/h)	SOUND (DBA)
PDKAF-2M-200	230/50	65	0,33	2700	850	70
PDKAF-2M-250	230/50	120	0,51	2580	1620	73
PDKAF-2M-300	230/50	145	0,65	2650	2500	75
PDKAF-M-350	230/50	210	1,08	2670	4200	78

## FCYP

REVERSIBLE  
AUTOMATIC  
SHUTTER FANS

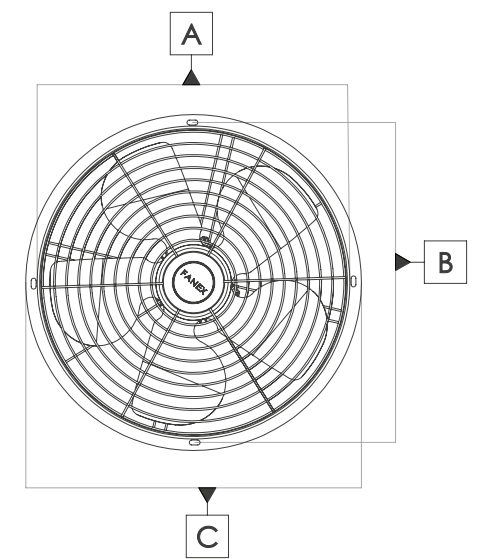
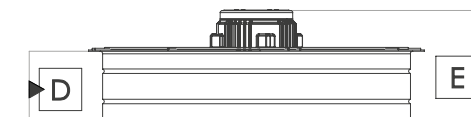
MODEL	AIR OUTLET DIAMETER (mm)	FRAME DIAMETER (mm)	VOLTAGE (VOLT/Hz)	POWER (WATT)	CURRENT (A)	SPEED (d/d)	AIR FLOW (m3/h)	SOUND (DBA)
FCYP-15	150	235X235	230/50	25	0,14	1400	300	40
FCYP-20	200	290X290	230/50	30	0,16	1400	500	41
FCYP-25	250	340X340	230/50	40	0,19	1400	900	43
FCYP-30	300	395X395	230/50	50	0,25	1400	1100	44

## PSM

MONOPHASE AXIAL  
INDUSTRIAL ASPIRATORS(FRONT-REAR CAGE)

MODEL	VOLTAGE (VOLT/Hz)	POWER (WATT)	CURRENT (A)	SPEED (d/d)	AIR FLOW (m3/h)	SOUND (DBA)
PSM 250-2B	230/50	180	0,88	2900	2200	72
PSM 250	230/50	120	1,08	1460	1250	54
PSM 300	230/50	130	1,20	1450	2100	55
PSM 350	230/50	155	1,10	1425	3200	59
PSM 400	230/50	185	1,20	1410	4500	62
PSM 450	230/50	210	1,22	1390	5450	66
PSM 500	230/50	225	1,01	1375	6900	70
PSM 550	230/50	250	1,02	1375	7300	72
PSM 600	230/50	250	1,02	1375	8000	72

MODEL	A (mm)	B (mm)	C (mm)	D (mm)	E (mm)
PSM 250	265	289	325	113	173
PSM 300	325	349	385	113	173
PSM 350	375	399	435	113	173
PSM 400	405	429	465	115	175
PSM 450	455	479	515	115	175
PSM 500	505	529	565	115	175
PSM 550	575	599	625	115	175
PSM 600	605	629	665	115	175



## PST

TRIPHASE AXIAL  
INDUSTRIAL ASPIRATORS(FRONT-REAR CAGE)

MODEL	VOLTAGE (VOLT/Hz)	POWER (WATT)	CURRENT (A)	SPEED (d/d)	AIR FLOW (m3/h)	SOUND (DBA)
PST 250-2B	380/50	180	0,88	2900	2200	72
PST 250	380/50	120	1,08	1480	1300	54
PST 300	380/50	130	1,20	1475	2250	55
PST 350	380/50	155	1,10	1435	3250	59
PST 400	380/50	185	1,20	1425	4600	62
PST 450	380/50	210	1,22	1410	5600	66
PST 500	380/50	225	1,01	1390	7150	70
PST 550	380/50	250	1,02	1380	7450	72
PST 600	380/50	250	1,02	1380	8200	72







## PSMK

SQUARE TYPE MONOPHASE  
INDUSTRIAL AXIAL EXHAUSTERS(METAL IMPELLER)

MODEL	AIR OUTLET DIAMETER (mm)	VOLTAGE (VOLT/Hz)	POWER (WATT)	CURRENT (A)	SPEED (d/d)	AIR FLOW (m3/h)	SOUND (DBA)	
PSMK 250-2B	265	230/50	180	0,88	2900	2200	72	
PSMK 250	265	230/50	120	1,08	1460	1250	54	
PSMK 300	325	230/50	130	1,20	1450	2100	55	
PSMK 350	375	230/50	155	1,10	1425	3200	59	
PSMK 400	405	230/50	185	1,20	1410	4500	62	
PSMK 450	455	230/50	210	1,22	1390	5450	66	
PSMK 500	505	230/50	225	1,01	1375	6900	70	
PSMK 550	575	230/50	250	1,02	1375	7300	72	
PSMK 600	605	230/50	250	1,02	1375	8000	72	

## PSTK

SQUARE TYPE  
TRIPHASE  
INDUSTRIAL AXI-  
AL EXHAUSTERS  
(METAL IMPELLER)

MODEL	AIR OUTLET DIAMETER (mm)	VOLTAGE (VOLT/Hz)	POWER (WATT)	CURRENT (A)	SPEED (d/d)	AIR FLOW (m3/h)	SOUND (DBA)	
PSTK 250-2B	265	380/50	180	0,88	2900	2200	72	
PSTK 250	265	380/50	120	1,08	1480	1300	54	
PSTK 300	325	380/50	130	1,20	1475	2250	55	
PSTK 350	375	380/50	155	1,10	1435	3250	59	
PSTK 400	405	380/50	185	1,20	1425	4600	62	
PSTK 450	455	380/50	210	1,22	1410	5600	66	
PSTK 500	505	380/50	225	1,01	1390	7150	70	
PSTK 550	575	380/50	250	1,02	1380	7450	72	
PSTK 600	605	380/50	250	1,02	1380	8200	72	

## FPSM

SQUARE TYPE  
MONOPHASE  
INDUSTRIAL AXIAL  
EXHAUSTERS  
(PLASTIC IMPELLER)

MODEL	AIR OUTLET DIAMETER (mm)	VOLTAGE (VOLT/Hz)	POWER (WATT)	CURRENT (A)	SPEED (d/d)	AIR FLOW (m3/h)	SOUND (DBA)	
FPSM-250	265	230/50	120	1,20	1460	1700	59	
FPSM-300	325	230/50	130	1,20	1450	2500	59	
FPSM-350	375	230/50	155	1,35	1425	3700	61	
FPSM-400	405	230/50	185	1,45	1410	5000	64	
FPSM-450	455	230/50	210	1,58	1390	6000	63	
FPSM-500	505	230/50	225	2,02	1375	7000	67	

## FPST

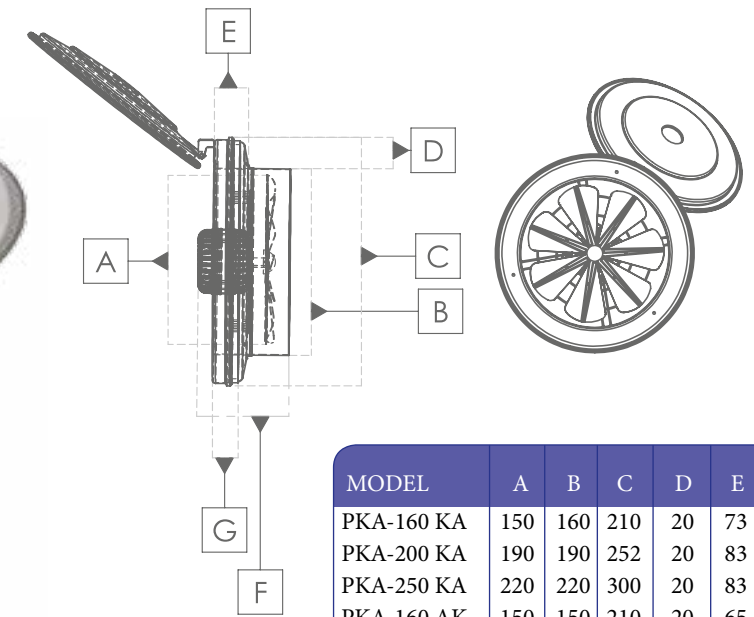
SQUARE TYE TRIPHASE  
INDUSTRIAL AXIAL EXHAUSTERS(PLASTIC IMPELLER)

MODEL	AIR OUTLET DIAMETER (mm)	VOLTAGE (VOLT/Hz)	POWER (WATT)	CURRENT (A)	SPEED (d/d)	AIR FLOW (m3/h)	SOUND (DBA)	
FPST-250	265	380/50	120	1,20	1460	1700	59	
FPST-300	325	380/50	130	1,20	1450	2500	59	
FPST-350	375	380/50	155	1,35	1425	3700	61	
FPST-400	405	380/50	185	1,45	1410	5000	64	
FPST-450	455	380/50	210	1,58	1390	6000	63	
FPST-500	505	380/50	225	2,02	1375	7000	67	



## PKA

AXIAL ASPIRATORS  
WITH LID AND FLANGE(SILENT)



MODEL	A	B	C	D	E	F	G
PKA-160 KA	150	160	210	20	73	91	17
PKA-200 KA	190	190	252	20	83	117	17
PKA-250 KA	220	220	300	20	83	117	17
PKA-160 AK	150	150	210	20	65	91	17
PKA-200 AK	190	190	252	20	70	117	17
PKA-250 AK	220	220	300	20	70	117	17

MODEL	VOLTAGE (VOLT/Hz)	POWER (WATT)	CURRENT (A)	SPEED (d/d)	AIR FLOW (m3/h)	SOUND (DBA)	
PKA-160 KA	230/50	35	0,37	1450	350	53	
PKA-200 KA	230/50	40	0,41	1450	600	55	
PKA-250 KA	230/50	50	0,48	1400	800	56	

## PKA

WINDOW-WALL TYPE  
AXIAL ASPIRATORS WITH FLANGE(SILENT)

MODEL	VOLTAGE (VOLT/Hz)	POWER (WATT)	CURRENT (A)	SPEED (d/d)	AIR FLOW (m3/h)	SOUND (DBA)	
PKA-160 AK	230/50	35	0,37	1450	350	53	
PKA-200 AK	230/50	40	0,41	1450	600	55	
PKA-250 AK	230/50	50	0,48	1400	800	56	



## PEK

WALL TYPE  
AXIAL CHIMNEY FANS WITH ROLLER

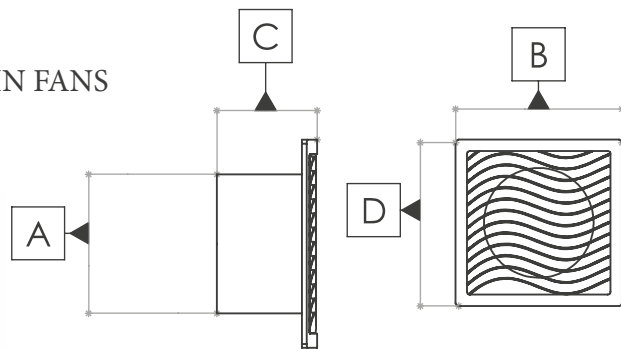
MODEL	VOLTAGE (VOLT/Hz)	POWER (WATT)	CURRENT (A)	SPEED (d/d)	AIR FLOW (m3/h)	SOUND (DBA)	
PEK 200	230/50	40	0,37	1400	340	37	
PEK 250	230/50	40	0,42	1400	670	42	
PEK 300	230/50	50	0,48	1400	1145	48	
PEK 350	230/50	65	0,50	1400	1900	54	





## D-BTA

BATHROOM-WC-CEILIN FANS  
(SLIM, SILENT)

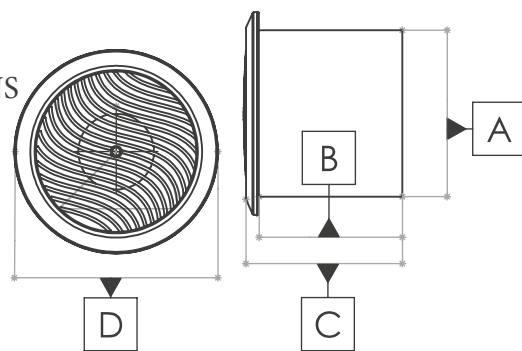


MODEL	A	B	C	D
D-BTA-100	99	159	65	13
D-BTA-120	119	188	76	13
D-BTA-150	149	220	88	15
D-BTA-200	199	360	113	18

MODEL	VOLTAGE (VOLT/Hz)	POWER (WATT)	CURRENT (A)	SPEED (d/d)	AIR FLOW (m3/h)	SOUND (DBA)
D-BTA-100	230/50	15	0,10	2600	95	41
D-BTA-120	230/50	20	0,13	2600	185	42
D-BTA-150	230/50	35	0,32	2250	285	49
D-BTA-200	230/50	40	0,42	2250	360	51

## DTY

ROUND DECORATIVE  
BATHROOM-WC-CEILING FANS

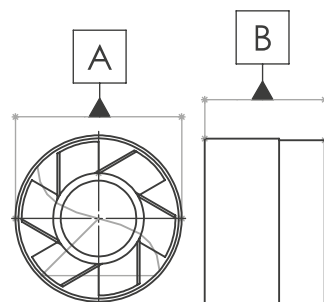


MODEL	A	B	C	D
DTY-100	99	97	107	138
DTY-120	119	97	107	165
DTY-150	149	113	123	186
DTY-200	199	113	123	232

MODEL	VOLTAGE (VOLT/Hz)	POWER (WATT)	CURRENT (A)	SPEED (d/d)	AIR FLOW (m3/h)	SOUND (DBA)
DTY-100	230/50	15	0,10	2600	95	40
DTY-120	230/50	20	0,13	2600	185	42
DTY-150	230/50	35	0,32	2250	285	48
DTY-200	230/50	40	0,42	2250	360	50

## APKT

PLASTIC BODY  
AXIAL IN LINE DUCT FANS(SILENT)



MODEL	A	B
APKT-100	97	99
APKT-120	97	119
APKT-150	113	149
APKT-200	113	199

MODEL	VOLTAGE (VOLT/Hz)	POWER (WATT)	CURRENT (A)	SPEED (d/d)	AIR FLOW (m3/h)	SOUND (DBA)
APKT-100	230/50	15	0,10	2600	95	38
APKT-120	230/50	20	0,13	2600	190	44
APKT-150	230/50	35	0,32	2250	305	51
APKT-200	230/50	40	0,42	2250	370	52

## FPP

DEGREE ADJUSTABLE  
5 AND 6 WINGS PLASTIC IMPELLERS

MODEL	MODEL
FPP 250	FPP 600
FPP 300	FPP 700
FPP 350	FPP 800
FPP 400	FPP 900
FPP 450	FPP 1000
FPP 500-1	FPP 1100
FPP 500-2	FPP 1200



MODEL	DIMENSION (mm)	USED IN
FYTF 200	200	LKT 200-A LKT 200-B
FYTF 250	250	LKT 250-A LKT 250-B
FYTF 315	315	LKT 315-A LKT 315-B

### IMPELLER (SPARE PART)

MODEL	MODEL
PSM 250 PERV	PKA 160 PERV
PSM 300 PERV	PKA 200 PERV
PSM 350 PERV	PKA 250 PERV
PSM 400 PERV	POBRA 140 PERV
PSM 450 PERV	POBRA 160 PERV
PSM 500 PERV	POBRA 180 PERV
PSM 550 PERV	PSEK 180 PERV
PSM 600 PERV	PKOBR PERV
	OÇES PERV



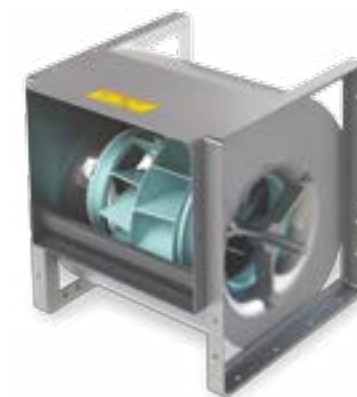
## PHA

MONOPHASE  
SPEED CONTROL DEVICE

MODEL	VOLTAGE (VOLT/Hz)	POWER (WATT)	CURRENT (A)
PHA-01	230/50	100W-1100 W	0,75 A-5,2 A

## FSK

BACKWARD CURVED LOW PRESSURE  
DOUBLE INLET CENTRIFUGAL FANS



MODEL	AIR OUTLET DIAMETER (mm)	NON MOTORIZED	WEIGHT	AIR FLOW (m3/h)
FSK-250	322X322	-	14,00	3500
FSK-280	360X360	-	17,00	6000
FSK-315	404X404	-	22,00	10000
FSK-355	453X453	-	31,00	13000
FSK-400	507X507	-	38,00	15000
FSK-450	570X570	-	45,00	20000
FSK-500	630X630	-	59,00	25000
FSK-560	710X710	-	77,00	35000
FSK-630	800X800	-	88,00	43000

## FRV

FORWARD CURVED DOUBLE INLET CENTRIFUGAL FANS

MODEL	AIR OUTLET DIAMETER (mm)	NON MOTORIZED	WEIGHT	AIR FLOW (m3/h)
FRV-7/7	230X210	-	6,00	2500
FRV-9/9	293X263	-	7,90	5000
FRV-10/10	330X290	-	9,30	6000
FRV-12/12	400X340	-	15,20	9000
FRV-15/15	470X405	-	20,60	13000
FRV-18/18	560X480	-	45,00	18500
FDH-R 20/20	630X630	-	54,00	25000
FDH-R 22/22	710X710	-	67,00	30000
FDH-R 25/25	800X800	-	79,00	36000





## FL2M

AC MOTORS

MODEL	VOLTAGE (VOLT/Hz)	POWER (WATT)	CURRENT (A)	SPEED (d/d)	AIR FLOW (m3/h)
FL2M-20-01	230/50	72	0,36	2600	--
FL2M-32-01	230/50	90	0,38	2700	--
FL2M-42-01	230/50	101	0,63	2750	--

## F4KGM

SHADE POLE MOTORS  
(FAN MOTORS)

MODEL	VOLTAGE (VOLT/Hz)	POWER (WATT)	CURRENT (A)	SPEED (d/d)	AIR FLOW (m3/h)
F4KGM-08-01	230/50	40	0,28	1320	--
F4KGM-08-02	230/50	50	0,38	1350	--
F4KGM-25-01	230/50	65	0,45	1380	--



MONOPHASE / TRIPHASE CENTRIFUGAL  
AND ASPIRATOR MOTORS

KOD	MODEL	VOLTAGE (VOLT/Hz)	POWER (WATT)	CURRENT (A)	SPEED (d/d)
MSM-2800	MONO.SLYGZ.MOTORU	230/50	600	2,54	2800
MSM-1400	MONO.SLYGZ.MOTORU	230/50	550	1,18	1400
TSM-2800	TRFZ.SLYGZ.MOTORU	380/50	600	2,54	2800
TSM-1400	TRFZ.SLYGZ.MOTORU	380/50	550	1,18	1400
SAM 0,18	SAN.ASPIRATÖR MOTRU	230/50	0,18	1,20	1400
SAM 0,25	SAN.ASPIRATÖR MOTRU	230/50	0,25	1,20	1400
SAM 0,55	SAN.ASPIRATÖR MOTRU	230/50	0,55	1,02	1400
SAT 0,18	SAN.ASPIRATÖR MOTRU	380/50	0,18	1,20	1400
SAT 0,25	SAN.ASPIRATÖR MOTRU	380/50	0,25	1,20	1400
SAT 0,55	SAN.ASPIRATÖR MOTRU	380/50	0,55	1,02	1400



## FDRM

2 POLE AXIAL EXTERNAL ROTOR MOTORS

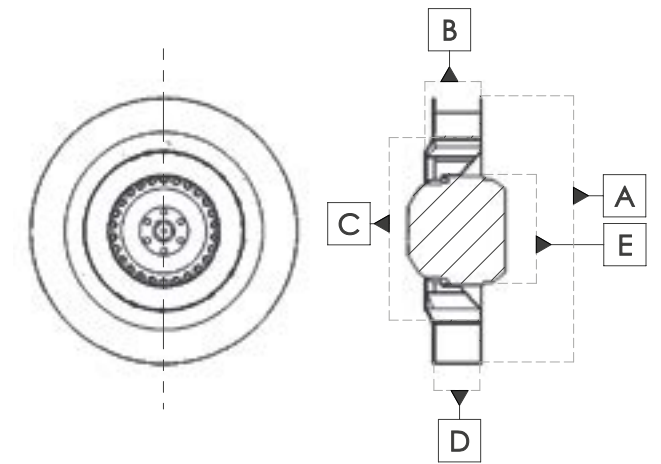
MODEL	VOLTAGE (VOLT/Hz)	POWER (WATT)	CURRENT (A)	SPEED (d/d)	AIR FLOW (m3/h)	IMPELLER DIAMETER(mm)
FDRM-200	230/50	90	0,33	2770	--	20
FDRM-250	230/50	120	0,51	2685	--	25
FDRM-300	230/50	160	0,65	2650	--	30
FDRM-350	230/50	240	1,08	2670	--	35



## FRF

SINGLE INLET RADIAL MOTOS AND FANS  
(BACKWARD CURVED, METAL)

MODEL	A	B	C	D	E
FRF-190-01	190	62	131	43	85
FRF-220-01	220	62	159	43	85
FRF-220-02	220	62	159	43	85
FRF-250-01	250	73	172	45	85
FRF-250-02	250	73	172	45	85
FRF-280-01	280	82	191	50	85
FRF-280-02	280	82	191	50	85



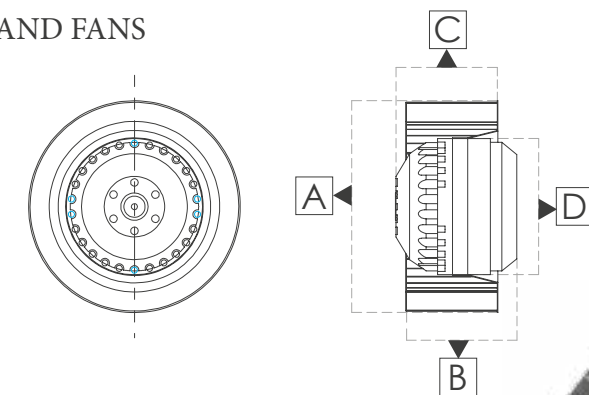
MODEL	VOLTAGE (VOLT/Hz)	POWER (WATT)	CURRENT (A)	SPEED (d/d)	AIR FLOW (m3/h)	SOUND (DBA)
FRF-190-01	230/50	8	0,38	2470	570	68
FRF-220-01	230/50	95	0,41	2650	830	72
FRF-220-02	230/50	105	0,44	2700	830	75
FRF-250-01	230/50	145	0,61	2580	1150	55
FRF-250-02	230/50	230	1,10	2650	1350	59
FRF-280-01	230/50	350	1,20	2750	2250	61
FRF-280-02	230/50	420	1,45	2750	2400	63
FRF-315	230/50	145	0,65	1400	2100	56
FRF-355	230/50	200	1,05	1400	2500	60
FRF-400	230/50	355	1,64	1400	4000	57
FRF-450	230/50	500	2,10	1400	5000	71
FRF-500	380/50	950	2,45	1400	8000	71
FRF-560	380/50	1500	2,75	1400	10000	76



## PRF

SINGLE INLET RADIAL MOTORS AND FANS  
(FORWARD CURVED, METAL)

MODEL	A	B	C	D
PRF-125-01	125	60	73	100
PRF-140-01	140	60	73	118
PRF-140-02	140	60	85	118
PRF-160-01	160	60	100	133
PRF-180-01	180	60	100	155
PRF-180-02	180	70	110	155



MODEL	VOLTAGE (VOLT/Hz)	POWER (WATT)	CURRENT (A)	SPEED (d/d)	AIR FLOW (m3/h)	SOUND (DBA)
PRF-125-01	230/50	110	0,52	2390	270	60
PRF-140-01	230/50	125	0,58	2300	400	62
PRF-140-02	230/50	180	0,82	2280	540	68
PRF-160-01	230/50	245	1,82	2200	680	70
PRF-180-01	230/50	320	1,15	2150	700	71
PRF-180-02	230/50	350	1,30	2300	760	72





# INDUSTRIAL VENTILATORS

## PEDESTAL VENTILATOR

INDUSTRIAL VENTILATOR WITH ELECTRICAL SPEED DEVICE

MODEL	VOLT	WATT	AIR FLOW (m3/h)	SPEED (d/d)
FSV-750-A	230	250	17000	1400

## WALKING PEDESTAL FAN

INDUSTRIAL VENTILATOR WITH ELECTRICAL SPEED DEVICE

MODEL	VOLT	WATT	AIR FLOW (m3/h)	SPEED (d/d)
FSV-750-Y	230	250	17000	1400

## WALL MOUNTED VENTILATOR

INDUSTRIAL VENTILATOR WITH ELECTRICAL SPEED DEVICE

MODEL	VOLT	WATT	AIR FLOW (m3/h)	SPEED (d/d)
FSV-750-D	230	250	17000	1400

## CEILING VENTILATOR

INDUSTRIAL VENTILATOR WITH ELECTRICAL SPEED DEVICE

MODEL	VOLT	WATT	AIR FLOW (m3/h)	SPEED (d/d)
FSV-750-T	230	250	17000	1400

## GROUND VENTILATOR

INDUSTRIAL VENTILATOR WITH ELECTRICAL SPEED DEVICE

MODEL	VOLT	WATT	AIR FLOW (m3/h)	SPEED (d/d)
FSV-750-Z	230	250	17000	1400



# ELECTRICAL HEATERS

## EKVATOR

### INFRARED HEATER

MODEL	HEATING AREA INDOOR-OUTDOOR	DIEMENSIONS (mm)	VOLTAGE (VOLT/HZ)	FREQUEN- CY (HZ)	WEIGHT (KG)	POWER (WATT)
FORCE-RK-20	29 m2-21 m2	960X235X150	230	50	3,95	2000
MİTRA-RK-25	33 m2-26 m2	960X235X150	230	50	4,05	2500
APOLLON-RK-28	36 m2-28 m2	1050X235X150	230	50	4,3	2800
ALM. STAND	--	--	--	--	--	--

## EKVATOR

### QUARTZ HEATER

MODEL	STEAM UNIT	TIP OVER SAFETY SWITCH	FAN	VOLTAGE (VOLT)	FREQUEN- CY (HZ)	CURRENT (A)	POWER (WATT)
4X4 QUARTZ	YES	YES	NO	230	50	9,8	2000

## EKVATOR

### MIDI INFRARED HEATER

MODEL	VOLTAGE (VOLT)	FREQUEN- CY (HZ)	WEIGHT (KG)	POWER (WATT)
FSI-3X450	230	50	9,8	1350

## EKVATOR

### LUX QUARTZ HEATER

MODEL	VOLTAGE (VOLT)	FREQUEN- CY (HZ)	WEIGHT (KG)	POWER (WATT)
4X4 QUARTZ MAXI LUX	230	50	9,8	2700
3X3 QUARTZ MIDI LUX	230	50	9,8	2100





## WARRANTY CONDITIONS

- 1) Our Fanexfan and Ekvator branded products are warranted against any kind of production faults for 2 years.
- 2) Faulty products arising due to production faults shall be repaired upon the submission of warranty certificate.
- 3) The repair time of the faulty products received with warranty certificate and shipment document is 30 days as stated on the Warranty Certificate.
- 4) If the faulty product is assembled, it shall not be replaced with a new one in any way.
- 5) For the faulty products used in places such as restaurants or Kebab restaurants, they shall not be accepted if they are excessively dirty, oily or smutted.
- 6) Since the application areas of the products are stated in warranty certificate, user should not use the products under conditions except as provided in the warranty certificate.
- 7) We kindly request to comply with above conditions in order to ensure a continuous service and continuity of this service which is customer focused and we thank you very much for your interest in our company.

## BANK ACCOUNT NUMBERS

BANK	BRANCH	BRANCH CODE	IBAN NUMBER
Finansbank	Kıraç	1074	TR19 0011 1000 0000 0029 6321 14
Akbank	Büyükkçekmece	197	TR61 0004 6001 9788 8000 1992 94
Halk Bankası	Beylikdüzü	817	TR27 0001 2009 8170 0010 2604 64
T. İş Bankası	Beylikdüzü	1245	TR97 0006 4000 0011 2450 0595 71
T. Finans Katılım Bankası	Avcılar	160	TR38 0020 6001 6001 5410 9800 02
Yapı Kredi Bankası	Beylikdüzü	981	TR14 0006 7010 0000 0088 2446 26
Garanti Bankası	Beylikdüzü	106	TR22 0006 2000 1060 0006 2942 22

